



# PRODUCT CATALOG EDITION 5

Professional grade products for the building trades

[PREFERREDCONSTRUCTIONPRODUCTS.COM](http://PREFERREDCONSTRUCTIONPRODUCTS.COM)



# Preferred Construction Products®

THE WHOLESALE'S SOURCE

PreferredConstructionProducts® offers professional grade products for the building trades. Our family of companies include:



### BigGuyConstructionProducts®

a variety of blue chip components and parts for building trade wholesalers: floor sinks, expansion tanks, gas products, etc.



### BigGuyToiletSeats®

a selection of residential wood and commercial plastic toilet seats



### CraftedMetal®

metal building products from nail plates to access doors



### DirectedAir®

products for the HVAC market: fittings, condensate accessories, PTACs, support strap and cable ties, etc.



### LabSafetySystems®

utility control systems for school science laboratories, classrooms and research facilities



### LittleBuddyTools™

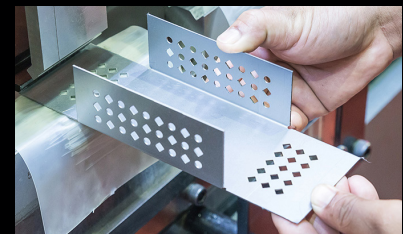
building trade tools



### TailWindRepairParts™

replacement and OEM repair parts for premium brand water heaters, pumps and circulators, and backflow

All products available for wholesale trade only.



# Table of Contents

## Plumbing Fixtures & Accessories ..... 5

*Floor Sinks...Trap Standards...Residential & Commercial Toilet Seats...HVAC, Thermal, Hydro-Pneumatic, and Potable Water Expansion Tanks*

## Water Management ..... 17

*Dilution & Neutralization Tanks...Adjustable Reach Key*

## Construction Accessories ..... 21

*Drywall Access Doors...Fire-Rated Access Doors...Stud Guards...FHA Strap...Boca Plates...Pipe Strap...Plumber's Tape...Duct Tape*

## HVAC Products ..... 31

*Web Duct Strap...Paint Brushes...Cable Ties...Copper Fittings...Malleable Fittings...PVC Condensate Traps...Condensate Pumps*

## Safety Controls & Utility Controllers..... 49

*Main Control Panels and Secondary Control Panels for gas, water, electrical emergency shut-offs*

## Gas Products ..... 55

*Risers...Compression Fittings...Gas Pipe Coil...Gas Pipe Stick...Regulators*

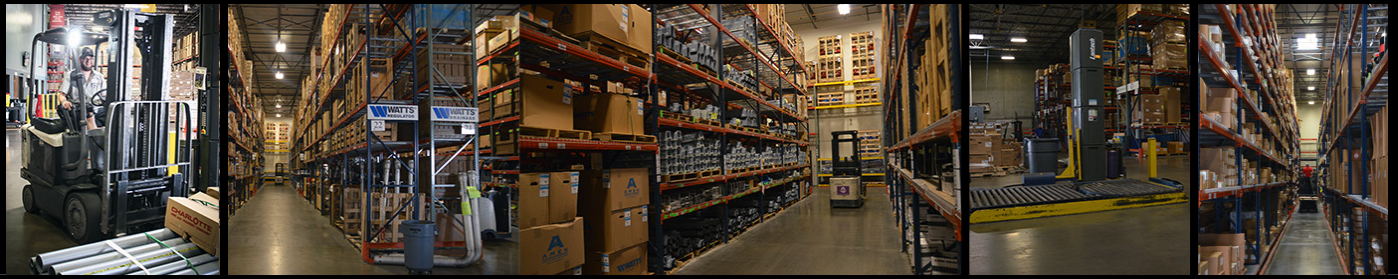
## Repair Parts..... 61

*For Water Heaters...Pumps & Circulators...Backflow*

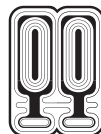
# ★ BIG GUY ★ CONSTRUCTION PRODUCTS®

a PreferredConstructionProducts® company

We have your residential and commercial building trade needs,  
in stock, in our state of the art warehouses!



**Floor Sinks  
and Grates**  
Cast iron, porcelain  
coated, aluminum  
dome strainer



SINCE 1908  
**wessels  
company**

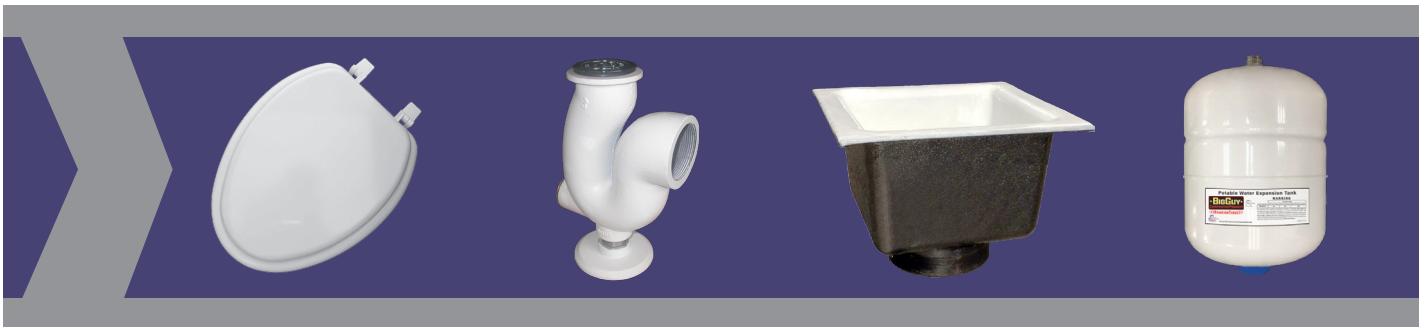
Complete line of tanks  
for all purposes





# Plumbing Fixtures & Accessories

|                                       |    |
|---------------------------------------|----|
| Floor Sinks .....                     | 6  |
| Trap Standards .....                  | 7  |
| Residential Toilet Seats .....        | 8  |
| Commercial Toilet Seats .....         | 10 |
| Thermal Expansion Tanks .....         | 12 |
| HVAC Expansion Tanks .....            | 13 |
| Hydro-Pneumatic Expansion Tanks ..... | 13 |
| Other Expansion Tanks .....           | 15 |
| Potable Water Expansion Tanks .....   | 16 |



# Plumbing Fixtures & Accessories

## Floor Sinks

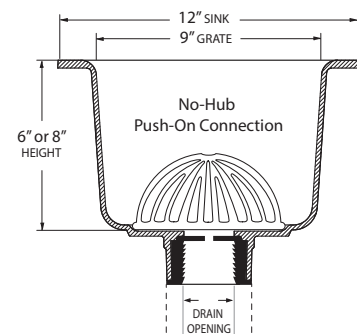
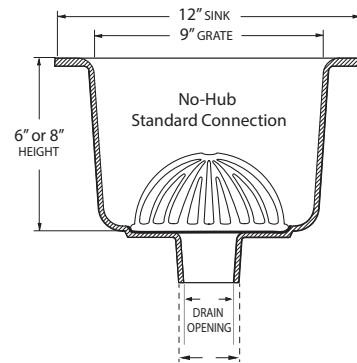


### DESCRIPTION:

BigGuy® offers 12" x 12" cast iron sanitary Floor Sinks with white acid-resistant porcelain coating. Aluminum dome interior bottom strainer included. Grate sold separately.

### 12" Square Floor Sink

| No-Hub Connection  | Item No.     | Dimension | Drain Opening | Depth | Drain Outside Diameter |
|--------------------|--------------|-----------|---------------|-------|------------------------|
|                    | FS1212-6-2NH | 2x12x12   | 2"            | 6"    | 2.35"                  |
|                    | FS1212-6-3NH | 3x12x12   | 3"            | 6"    | 3.35"                  |
|                    | FS1212-6-4NH | 4x12x12   | 4"            | 6"    | 4.38"                  |
|                    | FS1212-8-2NH | 2x12x12   | 2"            | 8"    | 2.35"                  |
|                    | FS1212-8-3NH | 3x12x12   | 3"            | 8"    | 3.35"                  |
|                    | FS1212-8-4NH | 4x12x12   | 4"            | 8"    | 4.38"                  |
| Push-On Connection | Item No.     | Dimension | Drain Opening | Depth | Drain Outside Diameter |
|                    | FS1212-6-2P  | 2x12x12   | 2"            | 6"    | 3.35"                  |
|                    | FS1212-6-3P  | 3x12x12   | 3"            | 6"    | 4.45"                  |
|                    | FS1212-6-4P  | 4x12x12   | 4"            | 6"    | 5.67"                  |
|                    | FS1212-8-2P  | 2x12x12   | 2"            | 8"    | 3.35"                  |
|                    | FS1212-8-3P  | 3x12x12   | 3"            | 8"    | 4.45"                  |
| FS1212-8-4P        | 4x12x12      | 4"        | 8"            | 5.67" |                        |



### FEATURES:

- 12" x 12" sanitary floor sink
- Cast iron with white acid-resistant porcelain coating
- Aluminum dome interior bottom strainer included.
- Grate sold separately

### Grates for Floor Sink

| Item No.  | Description | Fits Dimension | Grate Dimension |
|-----------|-------------|----------------|-----------------|
| FSG12     | Full Grate  | 12x12          | 9x9             |
| FSG12-1/2 | Half Grate  | 12x12          | 9x9             |
| FSG12-3/4 | 3/4 Grate   | 12x12          | 9x9             |

### FEATURES:

- Loose set acid-resistant coated cast iron
- Optional nickel/bronze grate available
- Grates sold separately from Floor Sinks



### DESCRIPTION:

BigGuy® offers a cast iron epoxy coated "P" Trap Standard for 3" iron pipe. Includes chrome plated bronze strainer, rubber gasket, clean-out plug and cast iron base plate. For use with all wall mounted service sinks.

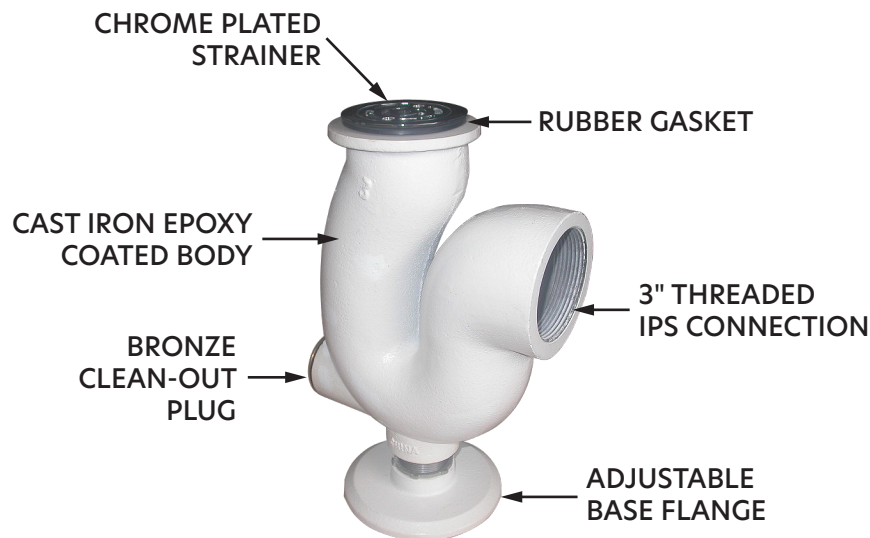


## 3" Trap Standard

| Item No. | Size |
|----------|------|
| BG003W   | 3"   |

### FEATURES:

- Cast iron, epoxy coated body
- Includes chrome plated bronze strainer & rubber gasket
- Bronze clean-out plug
- Cast iron base plate with adjustable base flange
- 3" threaded IPS connection (inlet)



# Plumbing Fixtures & Accessories

## Residential Toilet Seats

### DESCRIPTION:

BigGuyToiletSeats® for residential applications have molded wood construction and top-mounted hinges with non-corrosive plastic hardware.

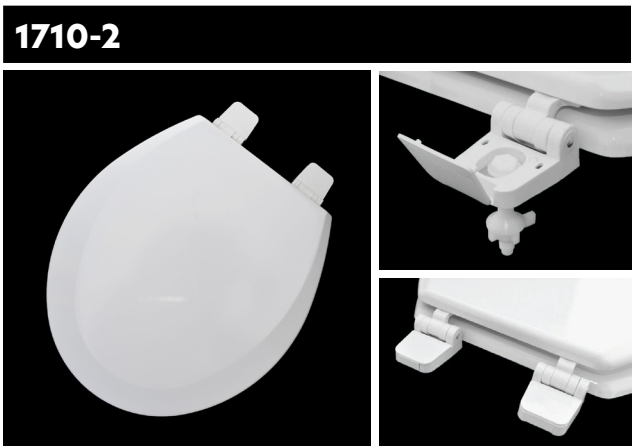


## Round Wood Toilet Seat

| Item No.  | Description   | Size | Color | Qty/Case |
|-----------|---------------|------|-------|----------|
| 1710-2    | Round         | 17"  | White | 5        |
| 1710-EC-2 | Round Economy | 17"  | White | 6        |

### FEATURES:

- 17" Round design
- Molded wood construction
- Multiple coats of enamel finish
- Top mounted hinges
- Non-corrosive plastic hardware
- White
- Regular design features sculpted full coverage lid with 4 bumpers and hinges with large mounting surface for greater stability
- Economy design features closed front with cover and 2 bumpers



# Plumbing Fixtures & Accessories

## Residential Toilet Seats

### DESCRIPTION:

BigGuyToiletSeats® for residential applications have molded wood construction and top-mounted hinges with non-corrosive plastic hardware.



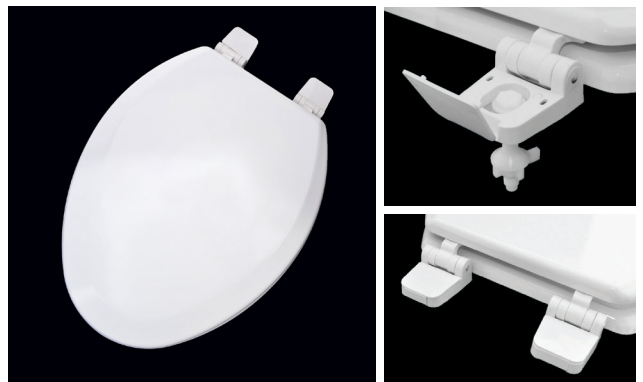
### Elongated Wood Toilet Seat

| Item No.  | Description       | Size | Color   | Qty/Case |
|-----------|-------------------|------|---------|----------|
| 1910-2    | Elongated         | 19"  | White   | 5        |
| 1910-3    | Elongated         | 19"  | Biscuit | 5        |
| 1910-EC-2 | Elongated Economy | 19"  | White   | 6        |
| 1910-EC-3 | Elongated Economy | 19"  | Biscuit | 6        |

### FEATURES:

- 19" Elongated design
- Molded wood construction
- Multiple coats of enamel finish
- Top mounted hinges
- Non-corrosive plastic hardware
- 4 bumpers
- Both regular and economy models come in white or biscuit
- Regular design features sculpted full coverage lid and hinges with large mounting surface for greater stability
- Economy design features closed front with cover

#### 1910-2 (-3)



#### 1910-EC-2 (-3)



# Plumbing Fixtures & Accessories

## Commercial Toilet Seats

### DESCRIPTION:

BigGuyToiletSeats® for commercial applications have plastic construction and, unless specified, top-mounted hinges with non-corrosive plastic hardware.



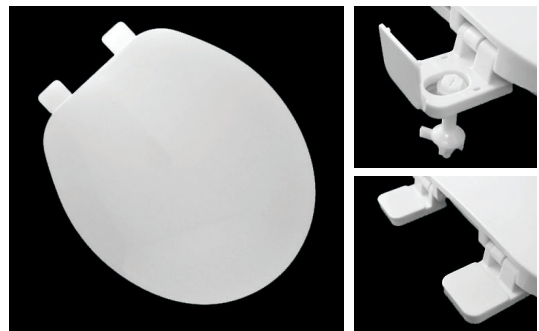
### Round Plastic Toilet Seat

| Item No.    | Description                   | Size | Qty/Case |
|-------------|-------------------------------|------|----------|
| 1720-2      | Round                         | 17"  | 5        |
| 1720-EZSC-2 | Round, Easy Clean, Slow Close | 17"  | 5        |

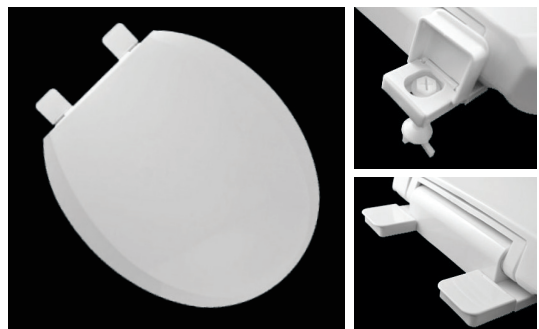
### FEATURES:

- 17" Round design
- Plastic construction
- Closed front with cover
- Top mounted hinges with non-corrosive plastic hardware
- 4 molded bumpers
- White
- EZSC model features easy-to-clean hinges and a slow close seat

#### 1720-2



#### 1720-EZSC-2





# Plumbing Fixtures & Accessories

## Commercial Toilet Seats

### DESCRIPTION:

BigGuyToiletSeats® for commercial applications have plastic construction and, unless specified, top-mounted hinges with non-corrosive plastic hardware.



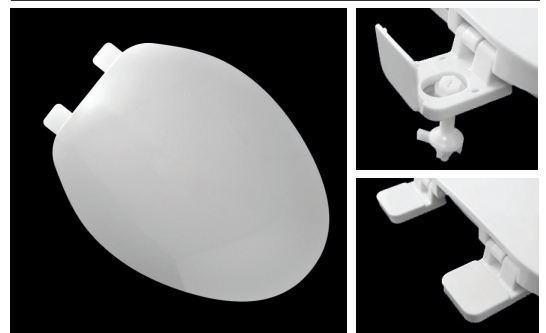
### Elongated Plastic Toilet Seat: Closed Front

| Item No.    | Description                                 | Size | Color | Qty/Case |
|-------------|---|------|-------|----------|
| 1920-2      | Closed Front, Cover                         | 19"  | White | 5        |
| 1920-EZSC-2 | Closed Front, Cover, Easy Clean, Slow Close | 19"  | White | 5        |

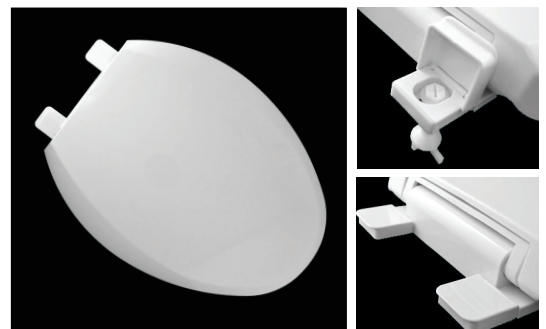
### FEATURES:

- 19" Elongated design
- Plastic construction
- Closed front with cover
- 4 molded bumpers
- Top mounted hinges with non-corrosive plastic hardware
- White
- EZSC model features easy-to-clean hinges and a slow close seat

#### 1920-2



#### 1920-EZSC-2



### Elongated Plastic Toilet Seat: Open Front

| Item No.   | Description                      | Size | Color | Qty/Case |
|------------|----------------------------------|------|-------|----------|
| 19215-2    | Open Front, No Cover             | 19"  | White | 5        |
| 19215-HD-2 | Open Front, No Cover, Heavy Duty | 19"  | White | 5        |

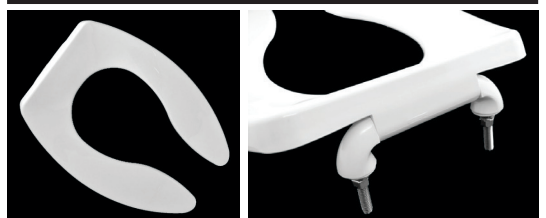
### FEATURES:

- 19" Elongated design
- Plastic construction
- Open front without cover
- 4 molded bumpers
- Top mounted, stainless steel, self-sustaining hinges
- White
- HD model features heavy duty construction

#### 19215-2



#### 19215-HD-2



Please contact your PreferredConstructionProducts® account manager for purchasing and pricing information.

PCP-CAT005-07252022 © 2022 PCP - All Rights Reserved



# Plumbing Fixtures & Accessories

## Thermal Expansion Tanks

BigGuy®/Wessels offers three expansion tank designs: Compression, Bladder and Diaphragm. Each tank style has models that are either ASME or Non-ASME coded. Tanks range in size from 2 to 10,000 gallons. Most of BigGuy®/Wessels pressure vessels are designed using a pre-pressurized vessel with an internal bladder or diaphragm to manage fluids under pressure.



Made by:  **wessels**  
company



Wessels Company has introduced a new smart style tank system standard on all fixed and removable bladder ASME tanks. This new bracket system includes a tamper-resistant guard mount that houses a pressure gauge and the WessView® sight glass monitor.

WessView® features a proprietary patented technology for maintenance and troubleshooting expansion tanks. This integrity monitor “bullseye” turns red when it comes in contact with water. The monitor allows operating engineers and service technicians to quickly and easily determine if water has breached the internal bladder or diaphragm.

Tanks also include a new, integrated pressure gauge. Users are now able to immediately read a positive indication of pressure change on a gauge that comes standard on every ASME unit.

The new design also includes a coupling on the tank, air side, to allow easy installation of the company's patented WessGuard® smart-tank monitor.



## Thermal Expansion Tanks

Domestic Water Heaters • Hot Potable • Open Systems • Corrosive Resistant Wetted Parts

Used to absorb the additional volume of potable water created by a domestic water heater. These tank designs incorporate a diaphragm or bladder to isolate the expanded water from the pressure controlling air cushion.

| Model                | Description              | ASME     | Gallons    | Max Pressure     |
|----------------------|--------------------------|----------|------------|------------------|
| <b>T-Series</b>      | Fixed Diaphragm          | non-ASME | 2.1-132.0  | 150 PSIG         |
| <b>TX-Series</b>     | Removable Bladder        | non-ASME | 2.1-79.2   | 150 PSIG         |
| <b>TTA-Series</b>    | Fixed Diaphragm          | ASME     | 3.5-90.0   | 150 PSIG         |
| <b>TXA-Series</b>    | Removable Bladder        | ASME     | 10.0-528.0 | 150/200/250 PSIG |
| <b>TXA-WG-Series</b> | Smart Tank w/WessGuard®  | ASME     | 10.0-528.0 | 150/200/250 PSIG |
| <b>TXA-FF-Series</b> | Full-Flow (Flow-Through) | ASME     | 23.0-528.0 | 150 PSIG         |

### FEATURES:

- Pre-charged (30PSIG/40PSIG TX)
- 240°F Maximum Temp
- Carbon steel shell and heavy duty butyl (FDA approved) bladder or diaphragm

### TXA series

- One of the industry's most robust bladder style tanks
- Can be installed vertically or horizontally
- Free standing models have system connection at the bottom of tank
- Designed to be installed between a backflow preventer and a hot water heater
- Easily replaced in the field
- Easily draining to assist in establishing proper air charge



# Plumbing Fixtures & Accessories

## HVAC and Hydro-Pneumatic Expansion Tanks

BigGuy®/Wessels offers three expansion tank designs: Compression, Bladder and Diaphragm. Each tank style has models that are either ASME or Non-ASME coded. Tanks range in size from 2 to 10,000 gallons. Most of BigGuy®/Wessels pressure vessels are designed using a pre-pressurized vessel with an internal bladder or diaphragm to manage fluids under pressure.



Made by:  **wessels**  
SINCE 1908  
company

### HVAC Expansion Tanks

Closed Loop • Non-Potable • Hydronic Heating & Cooling • Heat Transfer

| Model                | Description                                | ASME     | Gallons   | Max Pressure        |
|----------------------|--|----------|-----------|---------------------|
| <b>N-Series</b>      | Fixed Diaphragm                            | non-ASME | 2.1-79.4  | 150 PSIG            |
| <b>NL-Series</b>     | Removable Bladder                          | non-ASME | 2.1-132.1 | 150 PSIG            |
| <b>NTA-Series</b>    | Fixed Diaphragm                            | ASME     | 7.8-211   | 150 PSIG            |
| <b>NLA-Series</b>    | Removable Bladder                          | ASME     | 10-3963   | 125 PSIG            |
| <b>NLAP-Series</b>   | Top System Connection Replaceable Bladder  | ASME     | 11-290    | 125 PSIG            |
| <b>NVA-Series</b>    | Bottom System Connection Removable Bladder | ASME     | 15-525    | 125 PSIG            |
| <b>NLA-HP-Series</b> | High Pressure Removable Bladder            | ASME     | 10-3963   | 200/250 PSIG        |
| <b>NA-Series</b>     | Plain Carbon Steel Compression             | ASME     | 15-525    | varies 125/150 PSIG |
| <b>NAG-Series</b>    | Galvanized Carbon Steel Compression        | ASME     | 15-525    | varies 125/150 PSIG |



#### FEATURES:

- Pre-charged (12PSIG)
- Carbon steel shell and heavy duty butyl (FDA approved) bladder or diaphragm
- N, NL, NTA, NLA, NLAP, NVA 240°F Max Temp; NA, NAG 450°F Max Temp
- NTA, NLA, and NLAP series can be installed vertically or horizontally



Fixed diaphragm non-ASME tanks

### Hydro-Pneumatic Tanks

Cold Potable Applications • Pressure Booster Packages • Water Well Systems • Irrigation Systems

Designed to deliver water under pressure between pump cycles to provide sufficient flow to meet demands. In order to provide efficient water supply, hydro-pneumatic tanks regulate system pressures to quickly meet system demand.

| Model                | Description                     | ASME     | Gallons   | Max Pressure     |
|----------------------|---------------------------------|----------|-----------|------------------|
| <b>FX-Series</b>     | Removable                       | non-ASME | 2.1-528.0 | 150 PSIG         |
| <b>FXT-Series</b>    | Fixed Diaphragm                 | ASME     | 8-210     | 200 PSIG         |
| <b>FXA-Series</b>    | Removable Bladder 125PSI        | ASME     | 10-3963   | 125/200/250 PSIG |
| <b>FXA-WG-Series</b> | Removable Bladder w/WessGuard®  | ASME     | 10-3963   | 125/200/250 PSIG |
| <b>FXA-HP-Series</b> | High Pressure Removable Bladder | ASME     | 10-3963   | 200/250 PSIG     |

#### FEATURES:

- Pre-charged (30 PSIG)
- Carbon steel shell and heavy duty butyl (FDA approved) bladder or diaphragm
- 240°F Maximum Temperature
- FXA and FXT series can be installed vertically or horizontally



Please contact your PreferredConstructionProducts® account manager for purchasing and pricing information.

# Plumbing Fixtures & Accessories

## Expansion Tank Options

### DESCRIPTION:

BigGuy®/Wessels offers additional monitoring tools for critical mechanical system protection. WessGuard® acts to protect the critical components of the mechanical system by monitoring the effectiveness of the system expansion tank.



Made by:  **wessels**  
company

## Additional Wessels Tank Option:

### WessGuard®



Wessels Company's patented WessGuard® monitor is a smart tank add-on that provides essential protection by alerting you early before you have a maintenance issue with your expansion tank.

WessGuard® acts to protect the critical components of the mechanical system by using a non-intrusive capacitive sensor to monitor the effectiveness of the system's bladder tank.

The WessGuard® is a patented alarm and sensor package that monitors the removable butyl bladder inside pre-charged expansion vessels. The new and improved sensor is capacitive, rather than pressure sensitive, so it can detect both the presence of the bladder and water.

If the bladder extends beyond the normal movement, the WessGuard® monitor will activate an audible and LED alarm to notify maintenance staff of a potential system issue. In the case of compromised bladder integrity, water level will rise and activate the alarm. WessGuard® is the industry's first and only sentry for critical mechanical system protection.

The WessGuard® also features a dry set of contacts, making it fully Energy Management System (EMS) compatible.

WessGuard® can be installed on new or retrofit to many of the vessels installed today

# Plumbing Fixtures & Accessories

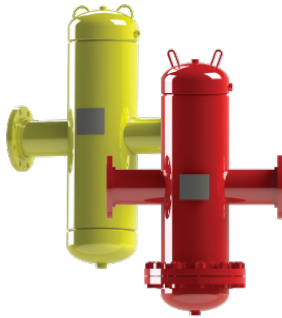
## Additional Products

### DESCRIPTION:

BigGuy®/Wessels offers a full line of Specialty Tanks and Accessories covering a wide range of applications.

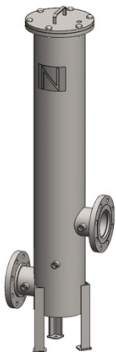


Made by:  **wessels**  
company



### Additional Wessels Products Available:

- Bladder Replacements
- Air and Dirt Elimination Equipment
- Chilled Water Buffer Tanks
- Hot Water Buffer Tanks
- Filtration
- Glycol Make-Up Packages
- Heat Exchangers
- Chemical Pot Feeder Tanks
- Condensate Neutralizers
- Primary/Secondary Headers
- Severe Service Products (Stainless Steel Tanks/Epoxy-Lined Tanks)
- Shock and Surge Tanks
- Steam Accessories (Flash Tanks/Blowdown Tanks)
- Storage Tanks (Glass/Epoxy-Lined)
- Fire Shock Protection Tanks
- Insulation Jackets
- Replacement Parts



Please contact your PreferredConstructionProducts® account manager for purchasing and pricing information.

PCP-CAT005-07252022 © 2022 PCP - All Rights Reserved



# Plumbing Fixtures & Accessories

## Potable Water Expansion Tanks

### DESCRIPTION:

BigGuyExpansionTanks™ absorb any increased volume of water created by thermal expansion and maintain balanced pressure throughout a potable water supply system, such as water heaters and hot water storage tanks.



## Potable Water Expansion Tanks

| Item No.  | Tank Volume | Connection | Diameter | Length | Pallet Quantity |
|-----------|-------------|------------|----------|--------|-----------------|
| BG-PXT-5  | 2.1 Gallons | 3/4" male  | 8"       | 12"    | 80              |
| BG-PXT-12 | 4.5 Gallons | 3/4" male  | 11"      | 155"   | 36              |

### FEATURES:

- Absorbs water caused by thermal expansion
- Returns water to the system when hot water is used
- Prevents dangerous pressure buildup
- Stops wasted energy, dripping faucets, toilet valve running, intermittent and pressure relief valve discharge
- Protects water heater, appliances, and fixtures
- Drawn steel construction
- Flexible butyl diaphragm separating the air chamber from the water chamber
- Stainless steel connector
- Certified for maximum temperature of 200°F and maximum pressure of 150 psi





Dilution and Neutralization Tanks ..... 18  
Adjustable Reach Key ..... 19



# Water Management

## Dilution & Neutralization Tanks

### DESCRIPTION:

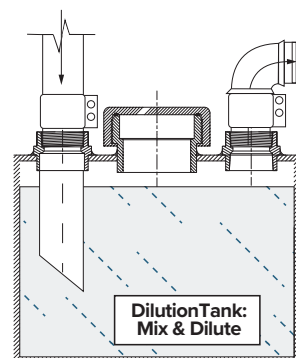
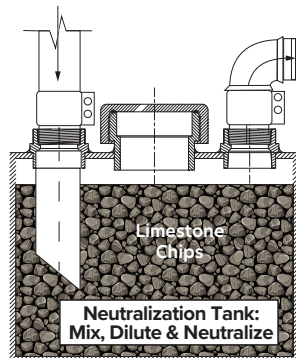
BigGuy®/ORION® tanks are designed to facilitate the dilution and neutralization of corrosive liquid waste so it is suitable for discharge into the sanitary sewer system, protecting the environment from contamination and downstream piping systems from chemical corrosion.



Made by: **ORION**  
A WATTS Brand

### FEATURES:

- Lightweight and easy to install
- Wide standard size range
- Custom configurations with respect to inlet, outlet, vent size, location and style
- Custom lid type with respect to plastic or plastic/metal combination; load bearing or non-load bearing; bolted, welded, or combination
- Custom access port type, size and location, including manholes and easy access gamma ports for inspection and limestone filling
- Fiberglass reinforced (FRP) models available
- Minimum maintenance
- High impact and high stress cracking resistance
- Where dilution alone is not sufficient for neutralization, limestone chips may be added to some models



# Water Management

## Adjustable Reach Key

### DESCRIPTION:

The LittleBuddyTools™ T-handle valve key allows for an easy and safe way to off water valves in hard to reach places. Designed to be fully adjustable, durable, convenient, and compact.



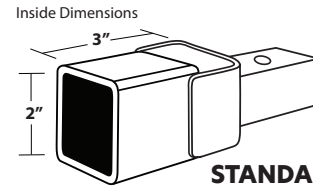
Made by: Adjustable Reach Key

| Item No.   | Description                                | Adjustable Length |
|------------|--|-------------------|
| A100       | Standard Key                               | 3.5' - 6.5'       |
| A100-CS    | Standard Key/Curbstop Adapter              | 3.5' - 6.5'       |
| A100-CS,WH | Standard Key/Curbstop Adapter/Wheel Handle | 3.5' - 6.5'       |
| A100-WH    | Standard Key/Wheel Handle                  | 3.5' - 6.5'       |
| A100-HD    | Heavy Duty with Standard Key               | 3.5' - 6.5'       |
| A200       | Standard Key                               | 5.5' - 9.5'       |
| A200-CS    | Standard Key/Curbstop Adapter              | 5.5' - 9.5'       |
| A200-CS,WH | Standard Key/Curbstop Adapter/Wheel Handle | 5.5' - 9.5'       |
| A200-WH    | Standard Key/Wheel Handle                  | 5.5' - 9.5'       |
| A200-HD    | Heavy Duty with Standard Key               | 5.5' - 9.5'       |
| A500       | Standard Key                               | 5.5' - 14'        |
| A1000      | Standard Key                               | Custom            |



### FEATURES:

- Fully adjustable
- Includes breakdown handle
- Positive action Snap-Lock Rings securely hold the Adjustable-Reach KEY in any fixed position
- Folds down to a compact size to fit in trunk, under the seat, or behind pickup bench seats so you don't have to worry about the key hanging out of truck beds or the possibility of theft



STANDARD KEY

Standard Key With Curb Stop Adapter And Wheel Handle

Standard Key With Curb Stop Adapter

## Accessories

| Item No.       | Description                         |
|----------------|-------------------------------------|
| ADJR CS        | Curb Stop Adapter                   |
| ADJR CS2       | Curb Stop Adapter for 2" Curb Stops |
| ADJR WH        | Wheel Handle Adapter                |
| ADJR VBC       | Valve Box Cleaner Adapter           |
| ADJR PINS      | Snap Lock Pins for A100 & A200      |
| ADJR PINS A500 | Snap Lock Pins for A500             |
| ADJR HANDLE    | Handle                              |



Please contact your PreferredConstructionProducts® account manager for purchasing and pricing information.

PCP-CAT005-07252022 © 2022 PCP - All Rights Reserved





**CommercialAccessDoors™**,  
a division of **CraftedMetal®**,  
offers drywall and fire-rated  
access doors for all your  
construction needs.

See pages 22-23

**Commercial**  a division of  
**Access Doors**  
**CADoors**

**GAUGEMETALSTAMPINGS™**  
 **CRAFTEDMETAL**

**GaugeMetalStampings™**,  
a division of **CraftedMetal®**,  
offers various metal straps  
and plates, most completely  
customizable to your needs.

See pages 26-30

**Use CraftedMetal® products  
for all of your construction needs,  
including:**

# Construction Accessories

|                                |    |
|--------------------------------|----|
| Drywall Access Doors .....     | 22 |
| Fire Rated Access Doors .....  | 23 |
| Stud Guards.....               | 24 |
| FHA Straps.....                | 25 |
| BOCA Plates .....              | 26 |
| Galvanized Pipe Strap .....    | 28 |
| Galvanized Plumber's Tape..... | 29 |
| Galvanized Duct Tape .....     | 29 |



# Construction Accessories

## Drywall Access Doors

Commercial a division of CRAFTED METAL  
Access Doors  
C A D o o r s

### DESCRIPTION:

CADoors drywall doors are 16-gauge steel access doors designed to provide secure and easy access to plumbing, electrical wiring or other utility applications behind walls.

## Drywall Access Doors

| Item No.     | Description          | Box Quantity |
|--------------|----------------------|--------------|
| PC 6.6 SDL   | Prime Coat 6" x 6"   | 1            |
| PC 8.8 SDL   | Prime Coat 8" x 8"   | 1            |
| PC 10.10 SDL | Prime Coat 10" x 10" | 1            |
| PC 12.12 SDL | Prime Coat 12" x 12" | 1            |
| PC 14.14 SDL | Prime Coat 14" x 14" | 1            |
| PC 16.16 SDL | Prime Coat 16" x 16" | 1            |
| PC 18.18 SDL | Prime Coat 18" x 18" | 1            |
| PC 24.24 SDL | Prime Coat 24" x 24" | 1            |

### FEATURES:

- CADoors are constructed from 16 gauge steel
- CADoors are prime coated with a white, low sheen finish allowing for easier secondary painting
- Anti - flex frame with tabs or bolt holes for easy installation
- Screwdriver operated latch

### ALSO AVAILABLE:

- Optional stainless steel finish
- Cylinder lock
- Other sizes available on request



Stainless Steel Option



Cylinder Lock Option



# Construction Accessories

## Fire-Rated Access Doors

### DESCRIPTION:

CADoors fire-rated doors are 16-gauge galvanized steel access doors designed to provide secure and easy access to plumbing, electrical wiring or other utility applications behind walls. They stand up to immense heat in emergency situations.

Commercial  
Access Doors  
C A D o o r s

A Division of CRAFTEDMETAL

## Fire-Rated Access Doors

| Item No.     | Description          | Box Quantity |
|--------------|----------------------|--------------|
| FR 8.8 RTL   | Prime Coat 8" x 8"   | 1            |
| FR 12.12 RTL | Prime Coat 12" x 12" | 1            |
| FR 14.14 RTL | Prime Coat 14" x 14" | 1            |
| FR 16.16 RTL | Prime Coat 16" x 16" | 1            |
| FR 18.18 RTL | Prime Coat 18" x 18" | 1            |
| FR 24.24 RTL | Prime Coat 24" x 24" | 1            |

### FEATURES:

- CADoors are constructed from 16 gauge galvanized steel
- CADoors are prime coated with a white, low sheen finish allowing for easier secondary painting
- Fire rated for 1.5 hours "B" label (wall) and 3 hours Warnock-Hersey (ceiling) and meets ANSI-UL 10B standards
- Heavy duty spring closer with interior latch release slide
- Recessed turn latch

### ALSO AVAILABLE:

- Optional stainless steel finish
- Optional white prime coat finish
- Cylinder lock
- Other sizes available on request



# Construction Accessories

## Stud Guards

### DESCRIPTION:

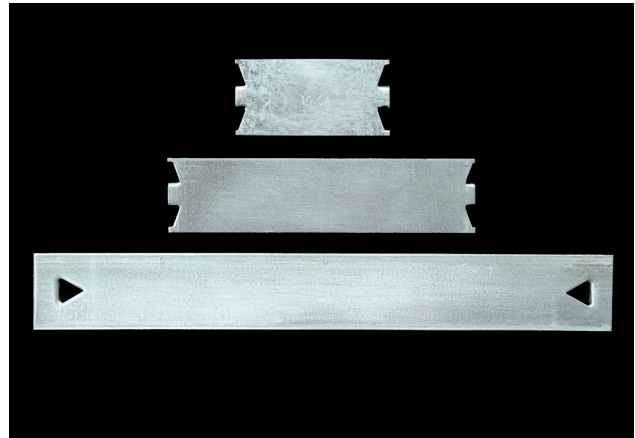
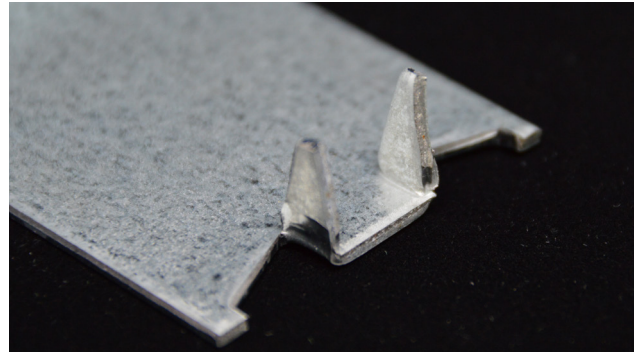
GaugeMetalStampings™ Stud Guards are short bands of metal attached to wall studs to prevent nails from penetrating and damaging pipes or wiring. GaugeMetalStampings™ Stud Guards are self-nailing and have end prongs.



## Stud Guards

| Item No. | Size       | Gauge | Box Quantity |
|----------|------------|-------|--------------|
| 15SG0318 | 1.5" X 3"  | 18    | 100          |
| 15SG0516 | 1.5" X 5"  | 16    | 100          |
| 15SG0518 | 1.5" X 5"  | 18    | 100          |
| 15SG0616 | 1.5" X 6"  | 16    | 100          |
| 15SG0618 | 1.5" X 6"  | 18    | 100          |
| 15SG0916 | 1.5" X 9"  | 16    | 100          |
| 15SG1216 | 1.5" X 12" | 16    | 100          |
| 15SG1816 | 1.5" X 18" | 16    | 100          |

Other sizes available.



# Construction Accessories

## FHA Straps

### DESCRIPTION:

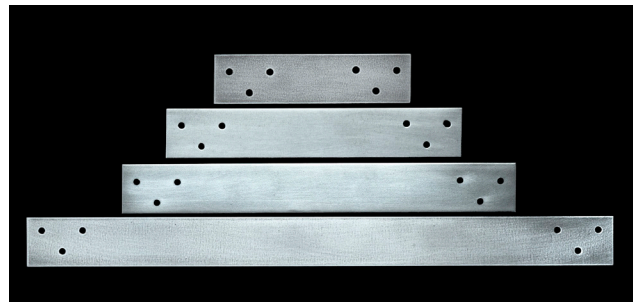
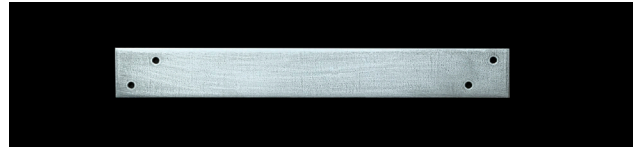
GaugeMetalStampings™ FHA Straps (or anchors) are straps of 16 gauge steel that tie two building elements together to secure the entire system.



### 1.5" FHA Straps

| Item No.  | Size       | Gauge | Holes | Box Quantity |
|-----------|------------|-------|-------|--------------|
| 15F0616-6 | 1.5" x 6"  | 16    | 6     | 100          |
| 15F0916-6 | 1.5" x 9"  | 16    | 6     | 100          |
| 15F1216-6 | 1.5" x 12" | 16    | 6     | 100          |
| 15F1816-6 | 1.5" x 18" | 16    | 6     | 100          |

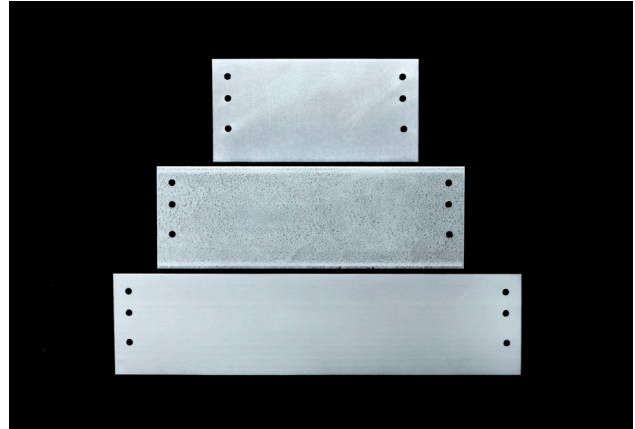
Custom sizes and hole patterns available.



### 3" FHA Straps

| Item No. | Size     | Gauge | Holes | Box Quantity |
|----------|----------|-------|-------|--------------|
| 3B0616-6 | 3" x 6"  | 16    | 6     | 100          |
| 3B0916-6 | 3" x 9"  | 16    | 6     | 50           |
| 3B1216-6 | 3" x 12" | 16    | 6     | 50           |
| 3B1816-6 | 3" x 18" | 16    | 6     | 50           |

Custom sizes and hole patterns available.



# Construction Accessories

## BOCA Plates

### DESCRIPTION:

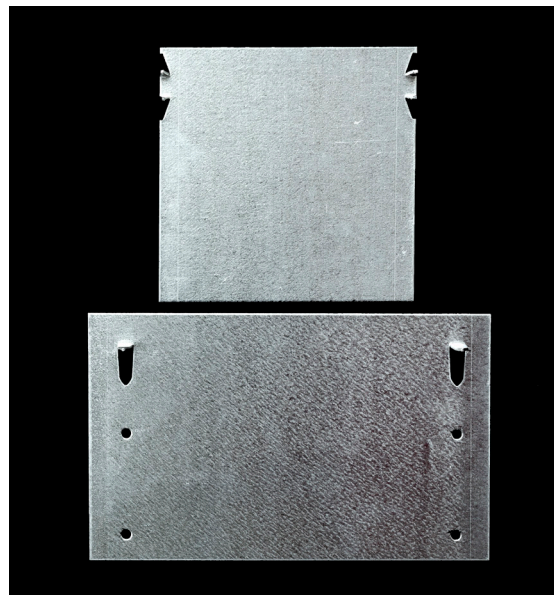
GaugeMetalStampings™ BOCA plates attach to wall studs to prevent nails from penetrating and damaging pipes or wiring. They can also reinforce stud joists. Choose from standard flat plates or self-nailing.



### Self Nailing BOCA Plates

| Item No. | Size    | Gauge | Box Quantity |
|----------|---------|-------|--------------|
| 3BSN0616 | 3" x 6" | 16    | 50           |
| 5BSN0516 | 5" x 5" | 16    | 50           |
| 5BSN0616 | 5" x 6" | 16    | 50           |
| 5BSN0816 | 5" x 8" | 16    | 50           |

Custom sizes and hole patterns available.



# Construction Accessories

## BOCA Plates

### DESCRIPTION:

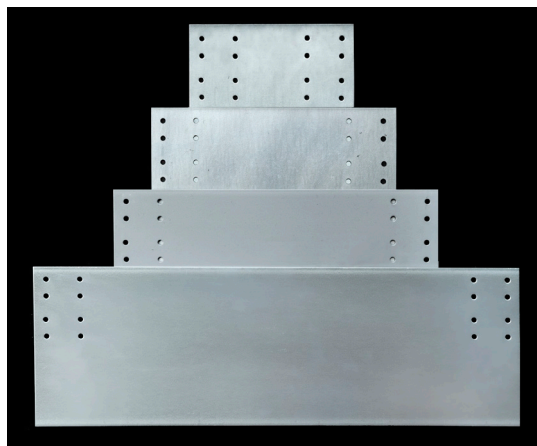
GaugeMetalStampings™ BOCA plates attach to wall studs to prevent nails from penetrating and damaging pipes or wiring. They can also reinforce stud joists. Choose from standard flat plates or self-nailing.



### Standard BOCA Plates

| Item No.   | Size     | Gauge | Holes | Box Quantity |
|------------|----------|-------|-------|--------------|
| 5B0816     | 5" x 8"  | 16    | 6     | 50           |
| 5B0916-6   | 5" x 9"  | 16    | 6     | 50           |
| 5B0916-16  | 5" x 9"  | 16    | 16    | 50           |
| 5B1216-16  | 5" x 12" | 16    | 16    | 50           |
| 5B1816-16  | 5" x 18" | 16    | 16    | 25           |
| 5B1216-12  | 5" x 12" | 16    | 12    | 50           |
| 6B0616-12F | 6" x 6"  | 16    | 12    | 50           |
| 6B0916-12F | 6" x 9"  | 16    | 12    | 50           |
| 6B1216-12F | 6" x 12" | 16    | 12    | 50           |
| 6B1816-12F | 6" x 18" | 16    | 12    | 25           |
| 6B2416-12F | 6" x 24" | 16    | 12    | 25           |
| 6B0616-16G | 6" x 6"  | 16    | 16    | 50           |
| 6B0916-16G | 6" x 9"  | 16    | 16    | 50           |
| 6B1216-16G | 6" x 12" | 16    | 16    | 50           |
| 6B1816-16G | 6" x 18" | 16    | 16    | 25           |

Custom sizes and hole patterns available.



6B G/16 Hole



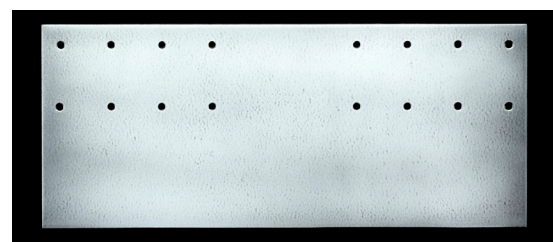
5B 0816/6 Hole



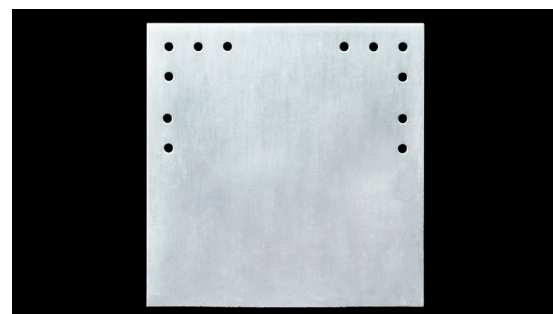
5B 0916/6 Hole



5B 1216/12 Hole



5B 1216/16 Hole



6B F/12 Hole

Please contact your PreferredConstructionProducts® account manager for purchasing and pricing information.

PCP-CAT005-07252022 © 2022 PCP - All Rights Reserved



# Construction Accessories

## Metal Accessories

### DESCRIPTION:

GaugeMetalStampings™ offers additional stamped metal accessories for your construction needs. Galvanized 2-hold Pipe Strap secures copper tube and iron pipe to studs or joists to reduce vibration noise.



## Galvanized Pipe Strap

| Item No. | Size (WxL) | Box Quantity |
|----------|------------|--------------|
| 050GR2PS | 1/2"       | 100          |
| 075GR2PS | 3/4"       | 100          |
| 100GR2PS | 1"         | 100          |
| 125GR2PS | 1-1/4"     | 50           |
| 150GR2PS | 1-1/2"     | 50           |
| 200GR2PS | 2"         | 25           |

Other sizes available.





# Construction Accessories

## Metal Accessories

### DESCRIPTION:

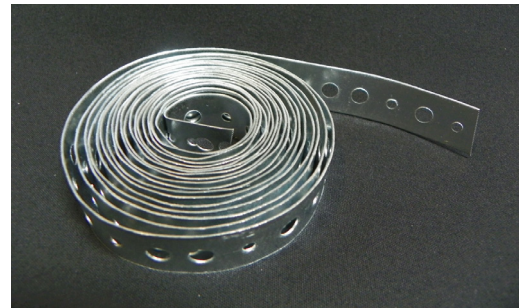
GaugeMetalStampings™ offers additional stamped metal accessories for your construction needs. Metal Duct Strap is for hanging main duct work trunk and branch lines and helps prevent the duct system from sagging over long runs.



## Galvanized Plumber's Tape

| Item No.     | Size (WxL)  | Gauge | Box Quantity |
|--------------|-------------|-------|--------------|
| 75PT10028-10 | 3/4" x 100" | 28    | 10           |

Other sizes available.



## Galvanized Duct Strap

| Item No.   | Size (WxL)  | Gauge | Box Quantity |
|------------|-------------|-------|--------------|
| 1DS10026   | 1" x 100"   | 28    | 1            |
| 15DS10026  | 1.5" x 100" | 28    | 1            |
| 1DS1026-10 | 1" x 10"    | 28    | 1            |

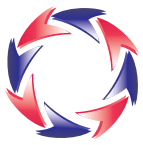
Other sizes available.



Please contact your PreferredConstructionProducts® account manager for purchasing and pricing information.

PCP-CAT005-07252022 © 2022 PCP - All Rights Reserved





# DirectedAir®

Products for the professional contractor for the maintenance of HVAC systems



High quality DirectedAir® products for HVAC system professionals include copper fittings, iron pipe fittings, steel nipples, web duct strap, cable ties, and more.

DirectedAir® manifolds stand ready to aid the HVAC professional to provide quality diagnostics to clients.

|                                      |            |
|--------------------------------------|------------|
| <b>Web Duct Support Strap .....</b>  | <b>3 2</b> |
| <b>Bristle Paint Brush .....</b>     | <b>3 2</b> |
| <b>Cable Ties .....</b>              | <b>3 3</b> |
| <b>Copper Fittings .....</b>         | <b>3 4</b> |
| <b>Black Iron Pipe Fittings.....</b> | <b>3 8</b> |
| <b>Black Steel Nipples.....</b>      | <b>3 9</b> |
| <b>PVC Condensate Traps .....</b>    | <b>4 0</b> |
| <b>Condensate Pumps.....</b>         | <b>4 1</b> |
| <b>Large/High Capacity.....</b>      | <b>4 2</b> |
| <b>Shallow Pan .....</b>             | <b>4 3</b> |
| <b>Peristaltic/Evaporative .....</b> | <b>4 4</b> |
| <b>Mini-Split/ Ductless .....</b>    | <b>4 5</b> |
| <b>Accessories .....</b>             | <b>4 6</b> |





### Web Duct Support Strap

**DESCRIPTION:**

DirectedAir® flexible woven mesh Web Duct Support Strap is a low cost and easy to install method of hanging flex ducting. Conforms to any size and can be secured with nails or staples. Easy to cut with scissors or knife.

| Item No.    | Size  | Tensile Strength | Color  | Yards/ Roll | Rolls/ Case |
|-------------|-------|------------------|--------|-------------|-------------|
| DA06-1.75-K | 1.75" | 360 lbs.         | Black  | 100         | 24          |
| DA06-3-K    | 3"    | 638 lbs.         | Black  | 100         | 8           |
| DA06-3-SV   | 3"    | 638 lbs.         | Silver | 100         | 8           |

Sold in case quantities only.

**FEATURES:**

- Woven polypropylene monofilament material
- 1.75" and 3" sizes
- Conforms to UL standards
- Quick installation using nails or staples
- Easier to install than metal hanging strap



### Bristle Paint Brush

| Item No. | Size | Pcs/ Box | Boxes/ Case |
|----------|------|----------|-------------|
| DA200    | 2"   | 12       | 30          |

Paint brushes sold in case quantities only (360 pcs. per case).

**FEATURES:**

- Aspen handle with hole for hanging
- Natural bristles
- 2" Width





### Cable Ties

**DESCRIPTION:**

DirectedAir® cable ties aid the HVAC professional with duct support, secure tie-down of duct, etc. Cable ties lock tightly to avoid slipping, stretching or sliding.

| Item No.        | Size | Tensile Strength | Color   | Max Bundle Diameter | Pcs/ Bag | Bags/ Case | Cases/ Pallet |
|-----------------|------|------------------|---------|---------------------|----------|------------|---------------|
| DA05-36-175-L-N | 36"  | 175 lbs.         | Natural | 10-3/8"             | 50       | 10         | 40            |

**FEATURES:**

- UL flame rated 94V-2
- UL 181B-C Listed
- Natural nylon 6/6 material
- Nylon 6/6 material from Dupont or Acsend
- -40°F to 185°F



\*DirectedAir® cable ties are natural color



# HVAC Products

## Copper Fittings

### DESCRIPTION:

DirectedAir® copper fittings are manufactured to the highest standards of quality and fully certified to industry standards for dimensions and material composition.



### FEATURES:

- ISO C9001, ISO 14001 certified
- ASME B16.22
- NSF/ANSI 61
- Fittings sold in full bag or case quantities only



## Elbows

45°  
Copper to  
Copper  
(CxC)



| Item No. | OD Size | Pcs/<br>Bag | Pcs/<br>Case |
|----------|---------|-------------|--------------|
| DA014-04 | 3/8"    | 25          | 5000         |
| DA014-05 | 1/2"    | 25          | 2000         |
| DA014-06 | 5/8"    | 25          | 1300         |
| DA014-07 | 3/4"    | 25          | 700          |
| DA014-08 | 7/8"    | 25          | 500          |
| DA014-11 | 1-1/8"  | 10          | 240          |
| DA014-14 | 1-3/8"  | 10          | 150          |
| DA014-16 | 1-5/8"  | 10          | 100          |
| DA014-21 | 2-1/8"  | 5           | 40           |

45°  
Street  
Fitting to  
Copper  
(FxC)



| Item No.  | OD Size | Pcs/<br>Bag | Pcs/<br>Case |
|-----------|---------|-------------|--------------|
| DA014S-04 | 3/8"    | 25          | 3000         |
| DA014S-05 | 1/2"    | 25          | 2000         |
| DA014S-06 | 5/8"    | 25          | 1300         |
| DA014S-07 | 3/4"    | 25          | 700          |
| DA014S-08 | 7/8"    | 25          | 500          |
| DA014S-11 | 1-1/8"  | 10          | 240          |
| DA014S-14 | 1-3/8"  | 5           | 150          |
| DA014S-16 | 1-5/8"  | 5           | 100          |



Certified to  
NSF/ANSI 61  
Manufactured to ASME B16.22  
ISO 9001, ISO 14001 Certified




**DESCRIPTION:**

DirectedAir® copper fittings are manufactured to the highest standards of quality and fully certified to industry standards for dimensions and material composition.




### Elbows (cont.)

**90°**  
Copper to Copper (CxC)




| Item No. | OD Size | Pcs/ Bag | Pcs/ Case |
|----------|---------|----------|-----------|
| DA019-03 | 1/4"    | 100      | 5000      |
| DA019-04 | 3/8"    | 25       | 4000      |
| DA019-05 | 1/2"    | 25       | 2000      |
| DA019-06 | 5/8"    | 50       | 1200      |
| DA019-07 | 3/4"    | 25       | 600       |
| DA019-08 | 7/8"    | 25       | 400       |
| DA019-11 | 1-1/8"  | 10       | 200       |
| DA019-14 | 1-3/8"  | 10       | 120       |

**90° Street**  
Fitting to Copper (FxC)




| Item No.  | OD Size | Pcs/ Bag | Pcs/ Case |
|-----------|---------|----------|-----------|
| DA019S-04 | 3/8"    | 25       | 3000      |
| DA019S-05 | 1/2"    | 25       | 2000      |
| DA019S-06 | 5/8"    | 25       | 1200      |
| DA019S-07 | 3/4"    | 25       | 600       |
| DA019S-08 | 7/8"    | 10       | 400       |
| DA019S-11 | 1-1/8"  | 10       | 200       |

**90° Long Radius**  
Copper to Copper (CxC)



| Item No.   | OD Size | Pcs/ Bag | Pcs/ Case |
|------------|---------|----------|-----------|
| DA019LT-03 | 1/4"    | 100      | 4000      |
| DA019LT-04 | 3/8"    | 25       | 3000      |
| DA019LT-05 | 1/2"    | 25       | 1500      |
| DA019LT-06 | 5/8"    | 25       | 800       |
| DA019LT-07 | 3/4"    | 25       | 450       |
| DA019LT-08 | 7/8"    | 20       | 240       |
| DA019LT-11 | 1-1/8"  | 10       | 120       |
| DA019LT-14 | 1-3/8"  | 5        | 80        |
| DA019LT-16 | 1-5/8"  | 2        | 40        |
| DA019LT-21 | 2-1/8"  | 2        | 20        |

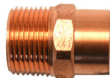
**90° Street Long Radius**  
Fitting to Copper (FxC)



| Item No.    | OD Size | Pcs/ Bag | Pcs/ Case |
|-------------|---------|----------|-----------|
| DA019SLT-03 | 1/4"    | 25       | 3000      |
| DA019SLT-04 | 3/8"    | 25       | 2000      |
| DA019SLT-05 | 1/2"    | 25       | 1500      |
| DA019SLT-06 | 5/8"    | 25       | 800       |
| DA019SLT-07 | 3/4"    | 25       | 450       |
| DA019SLT-08 | 7/8"    | 10       | 250       |
| DA019SLT-11 | 1-1/8"  | 10       | 120       |
| DA019SLT-14 | 1-3/8"  | 5        | 80        |
| DA019SLT-16 | 1-5/8"  | 5        | 40        |

### Adapters


**Male**



| Item No.    | OD Size     | Pcs/ Bag | Pcs/ Case |
|-------------|-------------|----------|-----------|
| DA10M-07x07 | 3/4" x 3/4" | 10       | 500       |
| DA10M-08x07 | 7/8" x 3/4" | 25       | 500       |
| DA10M-11x10 | 1-1/8" x 1" | 10       | 300       |

### Adapters

**Female**



| Item No.    | OD Size     | Pcs/ Bag | Pcs/ Case |
|-------------|-------------|----------|-----------|
| DA10F-06x05 | 5/8" x 1/2" | 50       | 400       |
| DA10F-07x07 | 3/4" x 3/4" | 10       | 300       |
| DA10F-08x07 | 7/8" x 3/4" | 10       | 250       |
| DA10F-11x10 | 1-1/8" x 1" | 5        | 250       |



Certified to NSF/ANSI 61  
Manufactured to ASME B16.22  
ISO 9001, ISO 14001 Certified



Please contact your PreferredConstructionProducts® account manager for purchasing and pricing information.

# HVAC Products

## Copper Fittings

### DESCRIPTION:

DirectedAir® copper fittings are manufactured to the highest standards of quality and fully certified to industry standards for dimensions and material composition.



### Couplings

w/ Roll Stop

Copper to Copper (CxC)



| Item No.  | OD Size | Pcs/ Bag | Pcs/ Case |
|-----------|---------|----------|-----------|
| DA03RS-03 | 1/4"    | 100      | 10000     |
| DA03RS-04 | 3/8"    | 100      | 5000      |
| DA03RS-05 | 1/2"    | 25       | 3000      |
| DA03RS-06 | 5/8"    | 25       | 1600      |
| DA03RS-07 | 3/4"    | 25       | 1000      |
| DA03RS-08 | 7/8"    | 25       | 600       |
| DA03RS-11 | 1-1/8"  | 10       | 300       |
| DA03RS-14 | 1-3/8"  | 10       | 200       |
| DA03RS-16 | 1-5/8"  | 10       | 120       |
| DA03RS-21 | 2-1/8"  | 5        | 60        |

### Couplings

Reducing

Copper to Copper (Cx)



| Item No.    | OD Size       | Pcs/ Bag | Pcs/ Case |
|-------------|---------------|----------|-----------|
| DA03R-04x03 | 3/8" x 1/4"   | 25       | 5000      |
| DA03R-05x03 | 1/2" x 1/4"   | 100      | 3000      |
| DA03R-05x04 | 1/2" x 3/8"   | 100      | 3000      |
| DA03R-06x04 | 5/8" x 3/8"   | 25       | 2000      |
| DA03R-06x05 | 5/8" x 1/2"   | 25       | 2000      |
| DA03R-07x05 | 3/4" x 1/2"   | 25       | 1100      |
| DA03R-07x06 | 3/4" x 5/8"   | 25       | 1000      |
| DA03R-08x04 | 7/8" x 3/8"   | 50       | 800       |
| DA03R-08x06 | 7/8" x 5/8"   | 25       | 600       |
| DA03R-08x07 | 7/8" x 3/4"   | 25       | 600       |
| DA03R-11x05 | 1-1/8" x 1/2" | 25       | 500       |
| DA03R-11x06 | 1-1/8" x 5/8" | 25       | 400       |
| DA03R-11x07 | 1-1/8" x 3/4" | 25       | 400       |
| DA03R-11x08 | 1-1/8" x 7/8" | 10       | 400       |
| DA03R-14x08 | 1-3/8" x 7/8" | 10       | 250       |

### Fitting Reducers (Bushings)

Fitting to Copper (Fx)



| Item No.    | OD Size         | Pcs/ Bag | Pcs/ Case |
|-------------|-----------------|----------|-----------|
| DA05R-04x03 | 3/8" x 1/4"     | 25       | 5000      |
| DA05R-05x04 | 1/2" x 3/8"     | 25       | 3000      |
| DA05R-06x05 | 5/8" x 1/2"     | 25       | 1800      |
| DA05R-07x05 | 3/4" x 1/2"     | 25       | 1200      |
| DA05R-07x06 | 3/4" x 5/8"     | 25       | 1100      |
| DA05R-08x07 | 7/8" x 3/4"     | 25       | 800       |
| DA05R-11x07 | 1-1/8" x 3/4"   | 10       | 400       |
| DA05R-11x08 | 1-1/8" x 7/8"   | 10       | 400       |
| DA05R-14x08 | 1-3/8" x 7/8"   | 10       | 250       |
| DA05R-14x11 | 1-3/8" x 1-1/8" | 10       | 250       |



# HVAC Products

## Copper Fittings & PVC Condensate Traps

### DESCRIPTION:

DirectedAir® copper fittings are manufactured to the highest standards of quality and fully certified to industry standards for dimensions and material composition.



### Tees

Copper to  
Copper to  
Copper  
(CxCx)



| Item No. | OD Size | Pcs/<br>Bag | Pcs/<br>Case |
|----------|---------|-------------|--------------|
| DA02R-03 | 1/4"    | 100         | 5000         |
| DA02R-04 | 3/8"    | 100         | 4000         |
| DA02R-05 | 1/2"    | 100         | 1000         |
| DA02R-06 | 5/8"    | 25          | 700          |
| DA02R-07 | 3/4"    | 20          | 400          |
| DA02R-08 | 7/8"    | 10          | 250          |
| DA02R-11 | 1-1/8"  | 10          | 120          |
| DA02R-14 | 1-3/8"  | 5           | 70           |
| DA02R-16 | 1-5/8"  | 2           | 50           |

### Tube Caps



| Item No. | OD Size | Pcs/<br>Bag | Pcs/<br>Case |
|----------|---------|-------------|--------------|
| DA04-04  | 3/8"    | 100         | 5000         |
| DA04-06  | 5/8"    | 100         | 2000         |
| DA04-07  | 3/4"    | 50          | 1500         |
| DA04-08  | 7/8"    | 50          | 1000         |
| DA04-11  | 1-1/8"  | 50          | 500          |
| DA04-14  | 1-3/8"  | 25          | 300          |
| DA04-16  | 1-5/8"  | 10          | 240          |

### P-Traps



| Item No. | OD Size | Pcs/<br>Bag | Pcs/<br>Case |
|----------|---------|-------------|--------------|
| DA12-06  | 5/8"    | 1           | 80           |
| DA12-07  | 3/4"    | 1           | 40           |
| DA12-08  | 7/8"    | 1           | 30           |
| DA12-11  | 1-1/8"  | 1           | 20           |



Certified to  
NSF/ANSI 61  
Manufactured to ASME B16.22  
ISO 9001, ISO 14001 Certified

Please contact your PreferredConstructionProducts® account manager for purchasing and pricing information.

PCP-CAT005-07252022 © 2022 PCP - All Rights Reserved



# HVAC Products

## Black Iron Pipe Fittings

### DESCRIPTION:

DirectedAir® Black Iron Pipe Fittings are manufactured to the highest standards of quality and fully certified to industry standards for dimensions and material composition. Offered in a variety of sizes to allow for application in a number of settings.



## Black Iron Pipe Fittings

| Item No.        | Size               | Description      | Pcs/Box | Pcs/Case |
|-----------------|--------------------|------------------|---------|----------|
| DAB014-05       | 1/2"               | 45 Elbow         | 50      | 200      |
| DAB014-07       | 3/4"               | 45 Elbow         | 40      | 120      |
| DAB019-05       | 1/2"               | 90 Elbow         | 50      | 200      |
| DAB019-07       | 3/4"               | 90 Elbow         | 35      | 105      |
| DAB019S-05      | 1/2"               | 90 Street Elbow  | 60      | 180      |
| DAB019S-07      | 3/4"               | 90 Street Elbow  | 35      | 105      |
| DAB02-05        | 1/2"               | Tee              | 40      | 120      |
| DAB02-07        | 3/4"               | Tee              | 35      | 70       |
| DAB02R-07x05x05 | 3/4" x 1/2" x 1/2" | Reducing Tee     | 30      | 120      |
| DAB02R-07x05x07 | 3/4" x 1/2" x 3/4" | Reducing Tee     | 40      | 80       |
| DAB03-05        | 1/2"               | Coupling         | 60      | 240      |
| DAB03-07        | 3/4"               | Coupling         | 50      | 150      |
| DAB03R-07x05    | 3/4" x 1/2"        | Reducer Coupling | 60      | 180      |
| DAB04-05        | 1/2"               | Cap              | 75      | 300      |
| DAB04-07        | 3/4"               | Cap              | 40      | 160      |
| DAB07-07x05     | 3/4" x 1/2"        | Hex Bushing      | 50      | 200      |
| DAB08-05        | 1/2"               | Union-Brass Seat | 50      | 100      |
| DAB08-07        | 3/4"               | Union-Brass Seat | 35      | 70       |
| DAB09-01        | 1/8"               | Pipe Plug        | 400     | 4800     |
| DAB09-05        | 1/2"               | Pipe Plug        | 50      | 600      |
| DAB09-07        | 3/4"               | Pipe Plug        | 30      | 360      |

### FITTING FEATURES:

- Class 150
- Material conforms to ASTM A-197
- Pressure Rating:  
Fittings: ANSI/ASME B16.3  
Bushings/Plugs: ANSI/ASME B16.14
- All fittings 100% pressure tested at factory
- ISO 9000: 2001
- Other sizes and types available
- Fittings sold in full box or case quantities only



### DESCRIPTION:

DirectedAir® Black Steel Nipples are manufactured to the highest standards of quality and fully certified to industry standards for dimensions and material composition. Offered in a variety of sizes to allow for application in a number of settings.



## Black Steel Nipples

| Item No.    | Size | Length | Pcs/Box | Pcs/Case |
|-------------|------|--------|---------|----------|
| DABN-05xC   | 1/2" | Close  | 25      | 400      |
| DABN-05x15  | 1/2" | 1-1/2" | 25      | 400      |
| DABN-05x20  | 1/2" | 2"     | 25      | 400      |
| DABN-05x25  | 1/2" | 2-1/2" | 25      | 300      |
| DABN-05x30  | 1/2" | 3"     | 25      | 300      |
| DABN-05x35  | 1/2" | 3-1/2" | 25      | 300      |
| DABN-05x40  | 1/2" | 4"     | 25      | 200      |
| DABN-05x45  | 1/2" | 4-1/2" | 25      | 200      |
| DABN-05x50  | 1/2" | 5"     | 25      | 200      |
| DABN-05x55  | 1/2" | 5-1/2" | 25      | 200      |
| DABN-05x60  | 1/2" | 6"     | 25      | 200      |
| DABN-05x70  | 1/2" | 7"     | 25      | 100      |
| DABN-05x80  | 1/2" | 8"     | 25      | 100      |
| DABN-05x90  | 1/2" | 9"     | 25      | 100      |
| DABN-05x100 | 1/2" | 10"    | 25      | 50       |
| DABN-05x110 | 1/2" | 11"    | 25      | 100      |
| DABN-05x120 | 1/2" | 12"    | 25      | 50       |
| DABN-05x180 | 1/2" | 18"    | 0       | 25       |
| DABN-05x240 | 1/2" | 24"    | 0       | 5        |
| DABN-05x300 | 1/2" | 30"    | 0       | 5        |
| DABN-05x360 | 1/2" | 36"    | 0       | 5        |
| DABN-05x480 | 1/2" | 48"    | 0       | 5        |
| DABN-05x600 | 1/2" | 60"    | 0       | 5        |
| DABN-05x720 | 1/2" | 72"    | 0       | 5        |

| Item No.    | Size | Length | Pcs/Box | Pcs/Case |
|-------------|------|--------|---------|----------|
| DABN-07xC   | 3/4" | Close  | 25      | 400      |
| DABN-07x15  | 3/4" | 1-1/2" | 25      | 400      |
| DABN-07x20  | 3/4" | 2"     | 25      | 300      |
| DABN-07x25  | 3/4" | 2-1/2" | 25      | 300      |
| DABN-07x30  | 3/4" | 3"     | 25      | 200      |
| DABN-07x35  | 3/4" | 3-1/2" | 25      | 200      |
| DABN-07x40  | 3/4" | 4"     | 25      | 150      |
| DABN-07x45  | 3/4" | 4-1/2" | 25      | 150      |
| DABN-07x50  | 3/4" | 5"     | 25      | 100      |
| DABN-07x55  | 3/4" | 5-1/2" | 25      | 100      |
| DABN-07x60  | 3/4" | 6"     | 25      | 100      |
| DABN-07x70  | 3/4" | 7"     | 25      | 75       |
| DABN-07x80  | 3/4" | 8"     | 25      | 75       |
| DABN-07x90  | 3/4" | 9"     | 25      | 50       |
| DABN-07x100 | 3/4" | 10"    | 25      | 50       |
| DABN-07x110 | 3/4" | 11"    | 25      | 50       |
| DABN-07x120 | 3/4" | 12"    | 25      | 50       |
| DABN-07x180 | 3/4" | 18"    | 0       | 25       |
| DABN-07x240 | 3/4" | 24"    | 0       | 5        |
| DABN-07x300 | 3/4" | 30"    | 0       | 5        |
| DABN-07x360 | 3/4" | 36"    | 0       | 5        |
| DABN-07x480 | 3/4" | 48"    | 0       | 5        |
| DABN-07x600 | 3/4" | 60"    | 0       | 5        |
| DABN-07x720 | 3/4" | 72"    | 0       | 5        |

### NIPPLE FEATURES:

- Schedule 40
- Meets or exceeds all applicable ASTM and ANSI standards
- Threaded both ends
- Other sizes and types available
- Fittings sold in full box or case quantities only



Please contact your PreferredConstructionProducts® account manager for purchasing and pricing information.

# HVAC Products

## PVC Condensate Traps

### DESCRIPTION:

Condensate Traps are the standard for draining condensate water from HVAC systems and keep units from drawing in outside air. DirectedAir® PVC Traps prevent air leaks, allowing condensation to drain, and result in a properly working system.

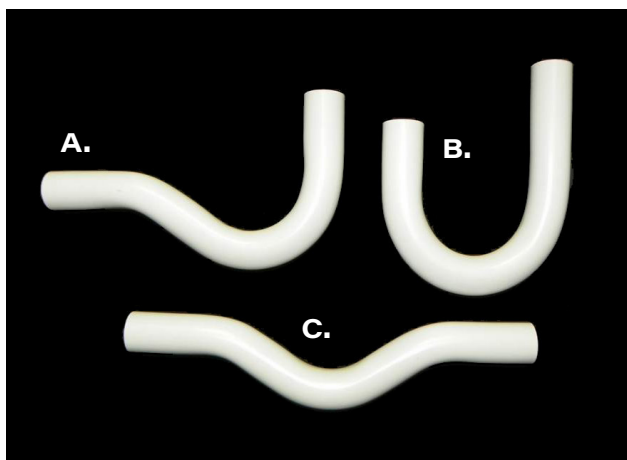


## PVC Condensate Traps

|    | Item No. | Size | Description           | Pcs/ Bag | Pcs/ Case |
|----|----------|------|-----------------------|----------|-----------|
| A. | DA3075P  | 3/4" | P-type trap           | 10       | 120       |
| B. | DA3075J  | 3/4" | J-type trap           | 10       | 100       |
| C. | DA3075R  | 3/4" | R-type (running) trap | 10       | 180       |

### FEATURES:

- PVC schedule 40 pipe
- 3/4" NPT
- Slip connection
- Full flow capacity





# HVAC Products

## Condensate Pumps

### DESCRIPTION:

Designed for automatic collection/removal of condensate from air conditioning, refrigeration and dehumidification equipment when gravity drainage is not possible. Also suitable for high efficiency oil and gas-fired condensing furnace and condensing boiler equipment.



Sold only in Texas, New Mexico and Oklahoma

## VCMA 15/20 Series

### FEATURES:

- ABS tank, motor cover, and volute
- 1/2 gallon tank
- Stainless steel motor shaft
- Removable 3/8" barbed check valve
- 3 inlet drain holes
- Thermal overload protection
- Auto start/stop
- Tubing and Safety Switch options
- cCSAus listed



| Item No.                              | Model       | HP   | Volts | Hz    | Amps | Watts | Shut-Off (ft) | PSI | 20' 3/8" Tubing | Safety Switch |
|---------------------------------------|-------------|------|-------|-------|------|-------|---------------|-----|-----------------|---------------|
| 554401                                | VCMA-15UL   | 1/50 | 115   | 60    | 1    | 60    | 15            | 6.5 | No              | No            |
| 554421                                | VCMA-20UL   | 1/30 | 115   | 60    | 1.5  | 93    | 20            | 8.7 | No              | No            |
| 554451                                | VCMA-20UL   | 1/30 | 230   | 50/60 | 0.5  | 75    | 17            | 7.4 | No              | No            |
| <b>Safety Switch Model</b>            |             |      |       |       |      |       |               |     |                 |               |
| 554405                                | VCMA-15ULS  | 1/50 | 115   | 60    | 1    | 60    | 15            | 6.5 | No              | Yes           |
| 554425                                | VCMA-20ULS  | 1/30 | 115   | 60    | 1.5  | 93    | 20            | 8.7 | No              | Yes           |
| 554455                                | VCMA-20ULS  | 1/30 | 230   | 50/60 | .05  | 75    | 17            | 7.4 | No              | Yes           |
| <b>Tubing Model</b>                   |             |      |       |       |      |       |               |     |                 |               |
| 554411                                | VCMA-15ULT  | 1/50 | 115   | 60    | 1    | 60    | 15            | 6.5 | Yes             | No            |
| 554431                                | VCMA-20ULT  | 1/30 | 115   | 60    | 1.5  | 93    | 20            | 8.7 | Yes             | No            |
| <b>Safety Switch and Tubing Model</b> |             |      |       |       |      |       |               |     |                 |               |
| 554415                                | VCMA-15ULST | 1/50 | 115   | 60    | 1    | 60    | 15            | 6.5 | Yes             | Yes           |
| 554435                                | VCMA-20ULST | 1/30 | 115   | 60    | 1.5  | 93    | 20            | 8.7 | Yes             | Yes           |
| 554461                                | VCMA-20ULST | 1/30 | 230   | 60    | 0.5  | 75    | 17            | 7.4 | Yes             | Yes           |

## VCC 20 Series

### FEATURES:

- Low profile
- ABS tank, motor cover, and volute
- 3/10 gallon tank
- Stainless steel motor shaft
- Removable 3/8" barbed check valve
- Thermal overload protection
- Auto start/stop
- Overflow detection float activated switch
- Two 1-1/8 inlet openings
- cCSAus listed



| Item No. | Model     | HP   | Volts | Hz    | Amps    | Watts | Shut-Off (ft) | PSI | 20' 3/8" Tubing | Safety Switch |
|----------|-----------|------|-------|-------|---------|-------|---------------|-----|-----------------|---------------|
| 5554200  | VCC-20ULS | 1/30 | 115   | 60    | 1.5     | 93    | 20            | 8.6 | No              | Yes           |
| 554210   | VCC-20ULS | 1/30 | 230   | 50/60 | 0.6/0.5 | 75    | 17            | 7.4 | No              | Yes           |

Please contact your PreferredConstructionProducts® account manager for purchasing and pricing information.

PCP-CAT005-07252022 © 2022 PCP - All Rights Reserved



# HVAC Products

## Condensate Pumps - Large/High Capacity Applications

### DESCRIPTION:

Designed for automatic collection/removal of condensate from air conditioning, refrigeration and dehumidification equipment when gravity drainage is not possible. Also suitable for high efficiency oil and gas-fired condensing furnace and condensing boiler equipment.



Sold only in Texas, New Mexico and Oklahoma

### VCMX 14/24/45 Series - High Capacity Model

#### FEATURES:

- Three year warranty
- 1/30 hp high performance motor
- 3/8" check valve outlet
- Fully automatic start/stop/safety switch
- Tubing/Sweat Sleeve/Safety Switch options
- cCSAus listed

| Item No.                                    | Model        | HP   | Volts | Hz    | Amps    | Watts | Shut-Off (ft) | 20' 3/8" Tubing | Anti-Sweat Sleeve | Safety Switch |
|---|--------------|------|-------|-------|---------|-------|---------------|-----------------|-------------------|---------------|
| 554520                                      | VCMX-20UL    | 1/30 | 115   | 60    | 1.5     | 93    | 21            | No              | No                | No            |
| 554521                                      | VCMX-20UL    | 1/30 | 230   | 50/60 | 0.6/0.5 | 75    | 20            | No              | No                | No            |
| <b>Safety Switch Model</b>                  |              |      |       |       |         |       |               |                 |                   |               |
| 554530                                      | VCMX-20ULS   | 1/30 | 115   | 60    | 1.5     | 93    | 21            | No              | No                | Yes           |
| 554531                                      | VCMX-20ULS   | 1/30 | 230   | 50/60 | 0.6/0.5 | 75    | 20            | No              | No                | Yes           |
| <b>Safety Switch and Tubing Model</b>       |              |      |       |       |         |       |               |                 |                   |               |
| 554550                                      | VCMX-20ULST  | 1/30 | 115   | 60    | 1.5     | 93    | 21            | Yes             | No                | Yes           |
| 554551                                      | VCMX-20ULST  | 1/30 | 230   | 50/60 | 0.6/0.5 | 75    | 20            | Yes             | No                | Yes           |
| <b>Sweat Sleeve and Safety Switch Model</b> |              |      |       |       |         |       |               |                 |                   |               |
| 554542                                      | VCMX-20ULS-C | 1/30 | 115   | 60    | 1.5     | 93    | 20            | No              | Yes               | Yes           |



VCMX-20UL



VCMX-20ULS



VCMX-20ULST



VCMX-20ULS-C

### VCL 14/24/45 Series - Large Tank Applications

#### FEATURES:

- 1 gallon tank
- Stainless steel motor shaft
- Auto start/stop
- Fan cooled concentric (14/24), PSC (45) motor
- Overflow dual-function detection switch
- 3/8" barbed discharge adapter
- Two 1-1/8" inlet openings
- Thermal overload protection
- 10.4 psi
- cCSAus listed

| Item No.                              | Model      | HP   | Volts | Hz    | Amps | Watts | Shut-Off (ft) | PSI  | 20' 3/8" Tubing | Safety Switch |
|---------------------------------------|------------|------|-------|-------|------|-------|---------------|------|-----------------|---------------|
| 553206                                | VCL-24UL   | 1/18 | 115   | 60    | 2.5  | 148   | 24            | 10.4 | No              | No            |
| <b>Safety Switch Model</b>            |            |      |       |       |      |       |               |      |                 |               |
| 553101                                | VCL-14ULS  | 1/50 | 115   | 60    | 1    | 78    | 14            | 6.1  | No              | Yes           |
| 553201                                | VCL-24ULS  | 1/18 | 115   | 60    | 2.5  | 148   | 24            | 10.4 | No              | Yes           |
| 553211                                | VCL-24ULS  | 1/18 | 230   | 50/60 | 1.2  | 148   | 24            | 10.4 | No              | Yes           |
| 553240                                | VCL-45ULS  | 1/5  | 115   | 60    | 3.5  | 185   | 45            | 19.5 | No              | Yes           |
| 553245                                | VCL-45ULS  | 1/5  | 230   | 50/60 | 1    | 250   | 45            | 19.5 | No              | Yes           |
| <b>Safety Switch and Tubing Model</b> |            |      |       |       |      |       |               |      |                 |               |
| 14940371                              | VCL-24ULS* | 1/18 | 115   | 60    | 2.5  | 148   | 24            | 10.4 | Yes             | Yes           |
| 14940372                              | VCL-24ULS* | 1/18 | 230   | 50/60 | 1.2  | 148   | 24            | 10.4 | Yes             | Yes           |



VCL-14ULS



VCL-24ULS



VCL-45ULS

# HVAC Products

## Condensate Pumps - Shallow Pan MCCU Applications

### DESCRIPTION:

The ABS series utilizes a sealed, submersible pump and is ideal for in-pan placement for condensate removal. An integrated unique float switch design assures reliability and security while providing easy access to the float for servicing.



Sold only in Texas, New Mexico and Oklahoma

### FEATURES:

- Permanently lubricated motor bearings
- Epoxy-coated cast aluminum housing
- Automatic on/off operation
- Easy to remove float housing
- Includes removable inlet filter screen
- cCSAus listed

## 1 ABS - Shallow Pan Applications

### ADDITIONAL FEATURES:

- Submersible pump with sump-type pick-up
- Includes 90° 1/4" MNPT adapter
- Low on/off levels - will operate in most standard condensate drain pans

| Item No. | Model        | HP    | Volts | Hz    | Amps    | Watts | Shut-Off (ft) | PSI |
|----------|--------------|-------|-------|-------|---------|-------|---------------|-----|
| 550521   | 1-ABS        | 1/150 | 115   | 60    | 1.1     | 70    | 10            | 4.3 |
| 550532   | 1-ABS        | 1/150 | 230   | 50/60 | 0.6/0.5 | 70    | 10            | 4.3 |
| 550522   | 1-ABS w/Tank | 1/150 | 115   | 60    | 1.1     | 70    | 10            | 4.3 |



## 2 ABS - Shallow Pan Applications

### ADDITIONAL FEATURES:

- 1/4" MNPT discharge suitable for 1/2" tubing

| Item No. | Model | HP   | Volts | Hz    | Amps    | Watts | Shut-Off (ft) | PSI |
|----------|-------|------|-------|-------|---------|-------|---------------|-----|
| 551020   | 2-ABS | 1/40 | 115   | 60    | 1.7     | 100   | 11.8          | 5.1 |
| 551030   | 2-ABS | 1/40 | 230   | 50/60 | 0.9/0.7 | 100   | 11.8          | 5.1 |



## 3 ABS - Shallow Pan Applications

### ADDITIONAL FEATURES:

- Submersible pump with collection tank
- Ideal for self contained, high volume, high head condensate removal
- 1 gallon tank
- Galvanized steel tank cover - 1-1/8" openings
- 1/2" MNPT pump discharge with brass check valve and compression fitting for 1/2" OD copper or rigid plastic tubing
- Powerful 1/12 hp pump motor

| Item No. | Model | HP   | Volts | Hz    | Amps    | Watts | Shut-Off (ft) | PSI  |
|----------|-------|------|-------|-------|---------|-------|---------------|------|
| 551320   | 3-ABS | 1/12 | 115   | 60    | 3.5     | 210   | 26            | 11.2 |
| 551330   | 3-ABS | 1/12 | 230   | 50/60 | 1.8/1.6 | 210   | 26            | 11.2 |



Please contact your PreferredConstructionProducts® account manager for purchasing and pricing information.

PCP-CAT005-07252022 © 2022 PCP - All Rights Reserved



# HVAC Products

## Condensate Pumps - Peristaltic / Evaporative Applications



Sold only in Texas, New Mexico and Oklahoma

### Peristaltic Series

#### DESCRIPTION

Self priming pump that removes condensate from ductless mini-split wall mount, cassette air conditioners and fan coils. Not affected by dust, bacteria, mold or other airborne particles that can be found in condensate water.

**TPS:** pump is connected directly to air conditioner and operates when AC on

**TPT:** pump is controlled by changes in temperature of the air moving through the AC coil

**TPR:** pump is controlled by float-operated switches-activates when water enters float reservoir

| Item No. | Model | Volts | Hz    | Amps | Watts | Shut-Off (ft) | Suction Lift (ft) | Max Flow (lbs) |
|----------|-------|-------|-------|------|-------|---------------|-------------------|----------------|
| 553674   | TPS   | 230   | 50/60 | 0.6  | 13    | 46            | 6.5               | 2.5            |
| 553675   | TPT   | 230   | 50/60 | 0.6  | 13    | 46            | 6.5               | 2.5            |
| 553676   | TPR   | 230   | 50/60 | 0.6  | 13    | 46            | 6.5               | 2.5            |



TPS



TPT



TPR

### CP Series - Evaporative Applications

#### DESCRIPTION

For use in evaporative coolers, sales displays, laboratories, water bath circulation and many other uses. Ideal as a universal OEM replacement pump.

#### FEATURES:

- Concentric fan-cooled double coil motor
- Thermal overload protection
- Corrosion resistant steel shaft
- Flame retardant housing
- Snap off volute plate for easy cleaning

| Item No. | Model    | HP   | Volts   | Hz    | Amps | Watts | Shut-Off (ft) | PSI |
|----------|----------|------|---------|-------|------|-------|---------------|-----|
| 540005   | CP-1-115 | 1/70 | 115/127 | 60    | 0.8  | 70    | 9.5           | 4.1 |
| 540015   | CP-1-230 | 1/70 | 230     | 50/60 | 0.4  | 70    | 9.5           | 4.1 |
| 541005   | CP2-115  | 1/50 | 115     | 60    | 1.0  | 80    | 11            | 4.8 |
| 541015   | CP-2-230 | 1/50 | 115/230 | 50/60 | 0.5  | 80    | 11            | 4.8 |
| 542005   | CP-3-115 | 1/30 | 115     | 60    | 1.1  | 90    | 12            | 5.2 |
| 542015   | CP3-230  | 1/30 | 230     | 50/60 | 0.56 | 90    | 12            | 5.2 |



### DESCRIPTION:

The EC-1 series removes condensate from wall mount, ductless mini-split units. Can also be used to remove condensate from fans coils. Pump can be installed above the unit in false or suspended ceiling, behind the wall mount air handler, or in plastic conduit or line-set channel.



Sold only in Texas, New Mexico and Oklahoma

### FEATURES:

#### Pump/Controller:

- Noise reducing design
- Easy to install brackets
- Reliable solid state switching technology
- Quick connect for pump to reservoir communications cable
- Quick connect for power cable
- 1/4" pump discharge outlet

#### Reservoir

- Hall effect on/off level sensors with high water safety sensor feature
- Extra large filter screen
- Hinged cover with quick release latch
- Clear tank for inspection and monitoring
- Top/Front/Back options for reservoir to pump connections
- Multi-step drain hose adapter

## EC1 Series - Mini-Split/Ductless Applications

### EC-1-DV ADDITIONAL FEATURES:

- Pump is capable of operating from a wide range of supply voltage to maintain consistent pump performance.

### EC-1K/1K-DV ADDITIONAL FEATURES:

- Includes Line Set Kit for mounting the pump on the interior wall, next to the indoor ductless mini-split unit. Provides space to install the EC-1-DV, line-set pipes, electrical wiring and drain hoses providing a clean finished look.

#### LINE SET KIT FEATURES:

- Right or left installation
- Cover provides dedicated positions for mounting pump and reservoir in secure and easy service locations
- Room inside duct for Line Set and wiring
- Generous room in lower elbow to easily bend Line Set pipes
- 2.1"x3" inside dimensions
- 9.7" drain hose tubing
- Detachable power cord
- Wall fasteners included
- 42" max length from reservoir enclosure to ceiling

### LINE SET KIT



EC-1-DV/EC-1K-DV with cover

| Item No. | Model    | Volts   | Hz    | Discharge Size | Shut-Off (ft) | Suction Lift (ft) |
|----------|----------|---------|-------|----------------|---------------|-------------------|
| 553500   | EC-1     | 115     | 60    | 1/4"           | 33            | 3                 |
| 553501   | EC-1     | 208-230 | 50/60 | 1/4"           | 33            | 3                 |
| 553507   | EC-1-DV  | 110-240 | 50/60 | 1/4"           | 33            | 3                 |
| 553510   | EC-1K    | 115     | 60    | Yes            | 33            | 3                 |
| 553511   | EC-1-K   | 208-230 | 50/60 | Yes            | 33            | 3                 |
| 553517   | EC-1K-DV | 110-240 | 50/60 | 1/4"           | 33            | 3                 |

### RESERVOIR AND PUMP



EC-1-DV/EC-1K-DV inside view

Please contact your PreferredConstructionProducts® account manager for purchasing and pricing information.

# HVAC Products

## Condensate Pumps - Mini-Split/Ductless Applications / Pump Accessories

### DESCRIPTION:

The EC-OP-K series and the EC-400 series removes condensate from ductless mini split wall and ceiling mounted air conditioners and fan coiled air conditioning equipment.



Sold only in Texas, New Mexico and Oklahoma

### EC-OP-K Series - Mini-Split/Ductless Applications

#### FEATURES:

- Works with units up to 34,000 BTU
- Clear reservoir for inspection
- 176°F thermal protection
- Alarm ready
- Easy to install mounting bracket
- Pump float retainer for easy service
- Quiet operation
- Service without removing from wall
- Requires no space inside the wall mount AC
- cCSAus listed

| Item No. | Model   | Volts | Hz    | Amps | Watts | Shut-Off (ft) | PSI |
|----------|---------|-------|-------|------|-------|---------------|-----|
| 553712   | EC-OP-K | 230   | 50/60 | 0.1  | 20    | 34.77         | 15  |



### EC-400 - Mini-Split/Ductless Applications

#### FEATURES:

- Compact two piece design
- Reliable on/off and safety overflow detection
- Wall, suspended ceiling, floor mount
- For intermittent operation-50% duty cycle
- Self-priming
- Use with units up to 25,000 BTU/hr
- cCSAus listed

| Item No. | Model  | Volts | Hz    | Amps | Watts | Discharge Size | Suction Lift | Max Flow (GPH) | Shut-Off (ft) | PSI  |
|----------|--------|-------|-------|------|-------|----------------|--------------|----------------|---------------|------|
| 553455   | EC-400 | 115   | 60    | 0.24 | 19    | 5/32"          | 3'           | 2 @ 2'         | 35            | 1.17 |
| 553458   | EC-400 | 230   | 50/60 | 0.1  | 20    | 5/32"          | 3'           | 2 @ 2'         | 35            | 1.17 |



### ACS 2 and ACS 3 - In Pan Condensate Overflow Detection Switches

Switches install in AC drain pan to shut off unit if condensate level approaches overflow.

| Item No. | Model | HP      | Volts       | Amps    | Lead Length |
|----------|-------|---------|-------------|---------|-------------|
| 599122   | ACS-2 | --      | 48V AC/DC   | 5 max.  | 18"         |
| 599123   | ACS-2 | --      | 48V AC/DC   | 5 max.  | 72"         |
| 599124   | ACS-3 | 1/3 max | 125-250 VAC | 11 max. | 82"         |

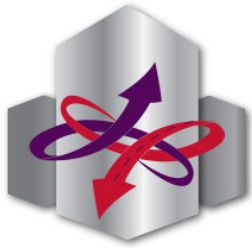


### TUBING

| Item No. | Model | Description                            |
|----------|-------|--|
| 599107   | T-3/8 | 100' of 3/8" ID x 1/2" OD clear tubing |







# DISTRIBUTION GROUP

the premier construction products warehousing partner



Currently Three Locations in South Central USA



## First and Foremost is Service

*Dependable, courteous, and responsive. Our goal is 100% customer satisfaction.*

## Warehouse Operations

*System engineered for maximum productivity, cost reduction, short order fulfillment times, and increased customer satisfaction.*

## Services

*We can tailor a program to meet a customer's specific requirements, needs, and goals. Our policies and procedures are structured around those of our manufacturers and customers.*

## Transportation Operations

*Most orders ship same day and arrive within one day to our customers. Primary local same day courier services are available.*

**Exclusive warehousing source and distribution center for PreferredConstructionProducts®**







# LabSafetySystems®

a PreferredConstructionProducts® company



**Lab Safety is not just our name...  
It's our whole purpose.**



## Utility Control Systems Science Laboratory - Classrooms - Research Facilities

LabSafetySystems® is a provider of factory assembled, tested and UL 508A certified utility control systems for science laboratories or other instructional, research and medical facilities. These utilities include domestic water, natural gas and electricity to convenience outlets. LabSafetySystems® products are designed to give maximum flexibility in control of facility utilities both for convenience and freedom from the potential hazards of accidents or malicious mischief.

They utilize Siemens™ industrial grade, field programmable logic controllers (PLC) that allow for easy programming updates in the field should your requirements change over time.

LabSafetySystems® utility control systems offer the architect and engineering design team a full range of system components, all of which are customizable to meet your most demanding requirements as well as relevant codes and standards. Our systems are tailored to your project specific needs.



All LabSafetySystems® products are factory assembled and certified to meet UL 508A standards.

# Safety Controls & Utility Controllers

|                           |    |
|---------------------------|----|
| Main Control Panels ..... | 50 |
| Secondary Panels.....     | 52 |



Please contact your PreferredConstructionProducts® account manager for purchasing and pricing information.

PCP-CAT005-07252022 © 2022 PCP - All Rights Reserved

# Safety Controls & Utility Controllers

## Main Control Panels



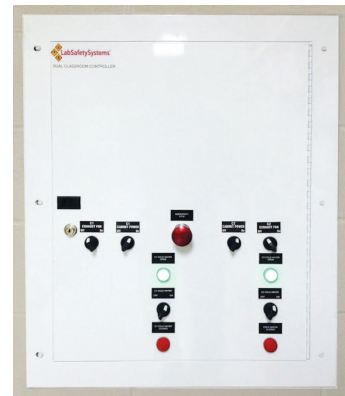
### DESCRIPTION:

The Main Utility Control Panel (UCP) is a safety device that regulates the availability of various utilities and devices in single or multiple laboratories. These can include domestic water, natural gas and electric outlets within a science laboratory or other instructional facilities as well as research and medical facilities. Fully customizable to meet project specific needs.

| Series        | Description   | Panel Finish | Utility Switches/ Lights |
|---------------|---|--------------|--------------------------|
| CSS-UCP-S     | Single Laboratory                                   | PC or SS     | For each utility         |
| CSS-UCP-D     | Dual Laboratory                                     | PC or SS     | For each utility         |
| CSS-UCP-TS    | Touch Screen<br>*single panel controls up to 6 labs | PC or SS     | Up to 4 utilities        |
| CSS-UCP-EP-S  | Integrated Electric Panel - Single Laboratory       | PC or SS     | For each utility         |
| CSS-UCP-EP-D  | Integrated Electric Panel - Dual Laboratories       | PC or SS     | For each utility         |
| CSS-UCP-TS-EP | Touch Screen & Integrated Electric Panel            | PC or SS     | Up to 4 utilities        |
| CSS-USCP      | Solenoid  | PC           | One for all utilities    |
| CSS-USCP-WIFI | WIFI Ready Solenoid                                 | PC           | N/A                      |



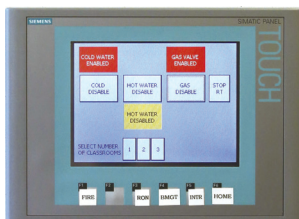
Single Lab UCP



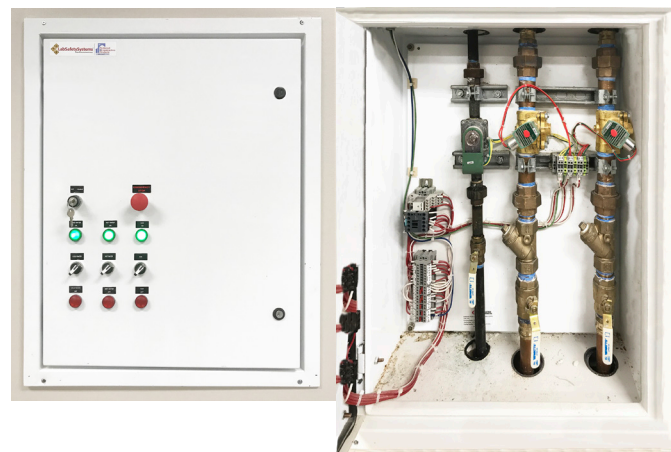
Dual Lab UCP

### FEATURES:

- Programmable logic controller (PLC) by Siemens™ Controls
- Keyed selector switch restricting the activation of utilities to the key holder
- Indicator lights showing enabled systems
- Emergency stop buttons
- Panel finishes available in white powder coat or stainless steel, as indicated
- Optional integrated electrical panel
- Optional connections to building's alarm system and/or management system
- Optional remote capabilities, fan controls, HMI touch screen controls
- Five year limited parts warranty (with factory start-up)



Touch Screen



CSS-USCP External & Internal



# Safety Controls & Utility Controllers

## Main Control Panels

### Installation Photos



#### St. Francis Episcopal Day School

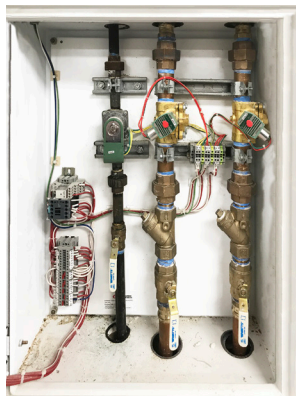
Houston, TX



St. Francis Episcopal Day School specified LabSafetySystems® CSS-UCP-S-4U-SS-BMS-F-KL utility control systems to regulate the availability of 4 utilities (cold water, hot water, gas and electricity) at student workstations. The utility control panels are in communication with the school's building management systems. Electric panels provide the on/off function for electric outlets and solenoid panels provide on/off function for fluids. Additional features include a stainless steel finish, fan enable/disable capability and a remote panic panel.

#### Pasadena Memorial Early College

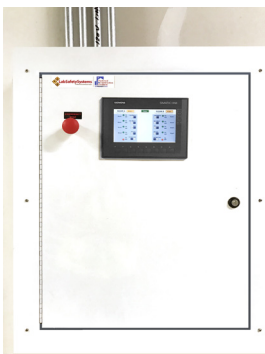
Pasadena, TX



CSS-USCP-3-D-D-B-120AC-PC-B-KL-S utility solenoid control systems from LabSafetySystems® were installed by Pasadena ISD at Pasadena Memorial Early College to regulate the availability of cold water, hot water and gas at the student workstations. These systems are designed to meet NSTA and TES standards for control of the selected utilities. Keyed access limits control of these systems to the classroom instructors. Additional features include wye strainers for water service and a remote panic panel.

#### Alvin Career & Tech Ed Center

Manvel, TX



In the Career and Technical Educational Center, Alvin ISD installed LabSafetySystems® CSS-UCP-TS-2-4U-PC-ESM utility control systems to regulate the availability of 4 utilities (cold water, hot water, gas and electricity) at the student workstations. An HMI touch screen regulates the utilities at two classrooms. Additional features include solenoid panels, electric panels, remote panic panels, flow monitoring at the emergency showers, and remote alarm beacon lights with audible alarms. Solenoid panels are constructed with ASCO water and fuel gas solenoid valves.



All LabSafetySystems® products are factory assembled and certified to meet UL standards.



All LabSafetySystems® solenoid panels are assembled to meet CSA certification standards.

US

# Safety Controls & Utility Controllers

## Secondary Panels

### DESCRIPTION:

Secondary Panels house the required mechanics of a system and work in combination with the LabSafetySystems® Main Control Panels. These Secondary Panels include Solenoid Panels for hot and cold domestic water and natural gas; Electric Panels to house the electric contractors, Remote Panic Panels and Gas Detection Panels. Secondary Panels are fully assembled and are pre-tested for use with the LabSafetySystems® Main Control Panels. Custom options are available.



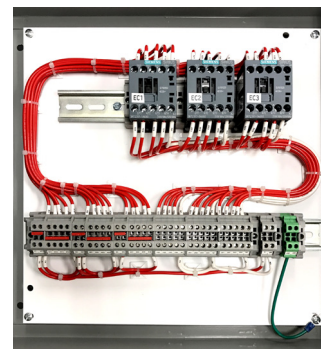
### Solenoid Panel

The Solenoid Panel (SP) houses the solenoid valves that regulate the availability of cold water, hot water, or natural gas at student workstations. Panels are pre-assembled and sized based on project design criteria. The factory supplied ASCO™ solenoids are UL Listed, CSA Certified and FM Approved.



### Electric Panel

The Electrical Panel (EP) houses the electric contractors which provide regulated electric service at the student workstations. The EP can be a separate panel or an integral part of the Main Utility Control Panel.



### Limited Access Control Panel

The Limited Access Control Panel (LACP) is a pre-assembled control panel designed to provide utility service to an individual prep station or teacher's demo table. This panel provides control of water and gas only. A keyed selector switch restricts the ability to activate the utility services to the key holder.



All LabSafetySystems® products are factory assembled and certified to meet UL standards.



All LabSafetySystems® solenoid panels are assembled to meet CSA certification standards.



# Safety Controls & Utility Controllers

## Secondary Panels

### DESCRIPTION:

Secondary Panels house the required mechanics of a system and work in combination with the LabSafetySystems® Main Control Panels. These Secondary Panels include Solenoid Panels for hot and cold domestic water and natural gas; Electric Panels to house the electric contractors, Remote Panic Panels and Gas Detection Panels. Secondary Panels are fully assembled and are pre-tested for use with the LabSafetySystems® Main Control Panels. Custom options are available.



### Remote Light Array

The Remote Light Array (RA) is a pre-assembled light array which operates in combination with the LabSafetySystems® UCP to provide a remote and visual display of the operational status for the system utility circuits or an alarm condition upon emergency shutdown.



### Remote Panic Panel

The Remote Panic Panel (RP) gives the instructor the ability to shut down the entire system with the touch of a button.



### Gas Detection Panel

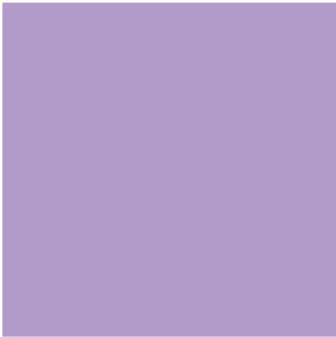
The Gas Detection Panel (GD) deactivates system utilities upon detection of a gas leak. The white powder coated panel includes a flashing red indicator which illuminates upon gas detection and an on/off yellow indicator which illuminates upon system shutdown.



All LabSafetySystems® products are factory assembled and certified to meet UL standards.

# Gas Products

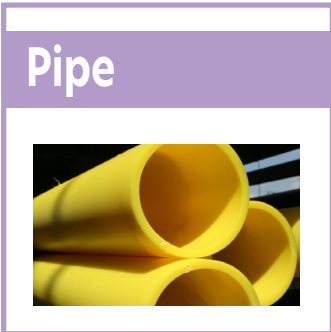
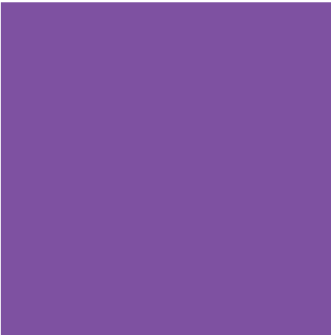
from our trusted partners



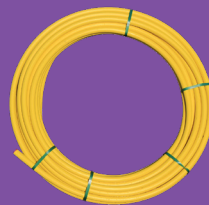
Offered By



a PreferredConstructionProducts® company



|                                  |    |
|----------------------------------|----|
| Risers .....                     | 56 |
| Compression Fittings .....       | 57 |
| Miscellaneous Gas Products ..... | 57 |
| Pipe Coil .....                  | 58 |
| Pipe Stick .....                 | 58 |
| Regulators .....                 | 59 |



# Gas Products

## Risers

### DESCRIPTION:

BigGuy® Riser options are available for a variety of residential and commercial gas applications. Risers offer a safe and simple method for connecting and transitioning from the PE pipe below the ground to the above ground piping system.



## Compression Risers

| Item No.     | Pipe Size NPT | Vertical Dimension |
|--------------|---------------|--------------------|
| 610757524000 | 3/4"          | 24"                |
| 610757536000 | 3/4"          | 36"                |
| 610010124000 | 1"            | 24"                |
| 610010136000 | 1"            | 36"                |
| 610121224000 | 1-1/4"        | 24"                |
| 610121236000 | 1-1/4"        | 36"                |
| 10002381     | 1-1/2"        | 24"                |
| 10002382     | 1-1/2"        | 36"                |
| 10002384     | 2"            | 24"                |
| 10002385     | 2"            | 36"                |

Available in additional sizes.



### FEATURES:

- Strong transition joint exceeds the operating capabilities of the PE pipe in which it is installed
- O-ring design for added protection
- Protected with electrostatically-applied, fusion-bonded epoxy powder coating designed for the exterior of gas petroleum pipelines
- Pre-bent riser style
- Outlet options: threaded, beveled for welding, flanged, or by-pass outlets
- Pipe coatings: fusion bonded with epoxy or polyester
- Available with extended pig tails and valves

## Transition Risers

| Item No.     | Pipe Size NPT | Vertical Dimension |
|--------------|---------------|--------------------|
| 600757524000 | 3/4"          | 24"                |
| 600757536000 | 3/4"          | 36"                |
| 600010124000 | 1"            | 24"                |
| 600010136000 | 1"            | 36"                |
| 600121224000 | 1-1/4"        | 24"                |
| 600151524000 | 1-1/2"        | 24"                |
| 600020224000 | 2"            | 24"                |
| 600020236000 | 2"            | 36"                |
| 6000056      | 3"            | 36"                |

Available in additional sizes.



### FEATURES:

- Strong transition joint exceeds the operating capabilities of the PE pipe in which it is installed
- O-ring design for added protection
- Protected with electrostatically-applied, fusion-bonded epoxy powder coating designed for the exterior of gas petroleum pipelines
- Can be supplied with any customer-specified PE pipe

## Flex Risers

| Item No.        | Pipe Size NPT | Length | Box Qty |
|-----------------|---------------|--------|---------|
| SHAFC050050W-36 | 1/2"          | 36"    | 10      |
| SHAFC050050W-48 | 1/2"          | 48"    | 10      |
| SHAFC050050W-84 | 1/2"          | 84"    | 10      |
| SHAFC060060Y-36 | 3/4"          | 36"    | 10      |
| SHAFC060060Y-48 | 3/4"          | 48"    | 10      |
| SHAFC060060Y-84 | 3/4"          | 84"    | 10      |

Available in additional sizes.



### FEATURES:

- Easy, quick assembly with pipe or crescent wrench; no need for welding or fusing.
- Leak-resistant design
- Zinc plated surfaces provide rust and corrosion protection
- Flexible case manufactured with UV protected material

## Anodeless Risers

Available upon request in various sizes. Contact representative for product availability.

# Gas Products

## Compression Fittings & Miscellaneous Gas Products

### DESCRIPTION:

BigGuy® Mechanical Compression Fittings are designed for fast and easy installation with no special tools or training needed. Ideal for natural gas/LPG yard and small commercial (up to 10 PSI) plumbing applications.



### Compression Couplings

| Item No. | PE Size (IPS) | DR |
|----------|---------------|----|
| 10000507 | 3/4 x 3/4     | 11 |
| 10000508 | 1 x 1         | 11 |
| 10000509 | 1-1/4 x 1-1/4 | 10 |
| 10000445 | 1-1/2 x 1-1/2 | 11 |
| 10000446 | 2 x 2         | 11 |



### Compression Tees

| Item No. | PE Size (IPS) | DR |
|----------|---------------|----|
| 10000490 | 3/4 x 3/4     | 11 |
| 10000493 | 1 x 1         | 11 |
| 10000487 | 1-1/4 x 1-1/4 | 10 |
| 10000496 | 1-1/2 x 1-1/2 | 11 |
| 10000499 | 2 x 2         | 11 |



### Compression Male Adaptors

| Item No.     | Steel x PE Size       | DR |
|--------------|-----------------------|----|
| 660757500000 | 3/4 NPT x 3/4 IPS     | 11 |
| 660010100000 | 1 NPT x 1 IPS         | 11 |
| 660121200000 | 1-1/4 NPT x 1-1/4 IPS | 10 |
| 10002388     | 1-1/2 NPT x 1-1/2 IPS | 11 |
| 10002389     | 2 NPT x 2 IPS         | 11 |



### FEATURES (all Compression Fittings):

- Epoxy coated
- Pressure rating: 10 psi
- IAPMO/UPC Listed
- Includes built in stiffener

### Miscellaneous Gas Products

| Product             | Description  |
|---------------------|--|
| Fusion Fittings     | Available upon request in various configurations and sizes                             |
| Detectable Tape     | Available upon request, color coded for water, sewer, gas, or caution in various sizes |
| Non Detectable Tape | Available upon request, color coded for telephone or gas in various sizes              |

Please contact your PreferredConstructionProducts® account manager for purchasing and pricing information.



# Gas Products

## Pipe



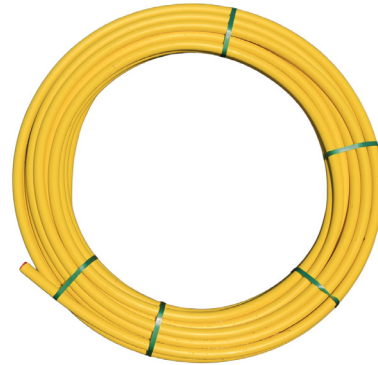
### DESCRIPTION:

BigGuy® medium-density polyethylene Yellow Gas Pipes are suitable for use in multiple applications for gas distribution. Available in 1/2-inch to 20-inch diameters, it comes in both sticks and coil lengths and can be installed by heat fusion or mechanical fittings.

### Yellow Gas Pipe Coil

| Item No.    | Nominal Size | Feet/Coil | Coils/Pack | Feet/Pack |
|-------------|--------------|-----------|------------|-----------|
| LP34500IPS  | 3/4"         | 500       | 7          | 3500      |
| LP1500IPS   | 1"           | 500       | 6          | 3000      |
| LP114500IPS | 1-1/4"       | 500       | 12         | 6000      |
| LP112500IPS | 1-1/2"       | 500       | 10         | 5000      |
| LP2500IPS   | 2"           | 250       | 12         | 3000      |

Available in 250' coils



### FEATURES:

- Superior resistance to most solvents and chemicals it is likely to encounter in natural and manufactured gas.
- Is non-corroding against gas and external galvanic soil conditions.
- Resists UV degradation when exposed to direct sunlight.
- Resists slow crack growth.
- Can be cut with simple pipe and tubing cutters, allowing for savings in labor and equipment.
- Reduces the cost of manpower required for installation due to its light weight and ease in transport and handling, as well as long laying lengths.

### Yellow Gas Pipe Stick

| Item No.    | Size     |
|-------------|----------|
| LP320SDR115 | 3" x 20' |
| LP420SDR115 | 4" x 20' |
| LP440SDR115 | 4" x 40' |

Available in additional sizes.



### FEATURES:

- Includes the same great features as the coil
- Comes in 20' and 40' straight lengths
- 20' readily stocked and immediately available



**DESCRIPTION:**

BigGuy® Gas Regulators provide pressure stability and are available in models appropriate for a variety of applications, including commercial and industrial, mid-range commercial and industrial, and residential.



Made by: **BelGAS**

## Regulators

| Model | Description            |
|-------|------------------------|
| B34   | Commercial             |
| B34S  | Medium Duty Commercial |
| B42   | Residential            |

**FEATURES (B34):**

- Interchangeable brass orifice
- Spring-loaded internal relief valve assembly
- Field interchangeable adjustment spring
- Controlled size breather orifice eliminates pulsation, provides normal action at low flows
- Wide range of valve body sizes including NPT and Flange connections

**B34**



**FEATURES (B34S):**

- Interchangeable brass orifice
- Spring-loaded internal relief valve assembly
- Molded diaphragm consisting of Buna-N and nylon
- Upper diaphragm plate of plated steel
- Stainless steel lever pin
- Zinc with dichromate plated steel lever
- One piece molded Buna-N valve seat
- Alodined aluminum valve stem
- Vent sizes 1/4", 3/8", 3/4", 1"
- Stainless steel vent screen

**B34S**



**FEATURES (B42):**

- Spring loaded and self operated
- Molded diaphragm
- 1" vent
- Internal relief option
- Three connection versions provide flexibility
- Light and compact

**B42**



*Gas regulator products not available in all areas of South Central USA.  
Contact representative for product availability.*

Need repair parts for

Water Heaters? Pumps & Circulators? Backflow?

**TailWind™ can fill all of your needs!**

A.O. Smith • State • American • Armstrong • Bell & Gossett • Watts • Ames

# TailWind™

REPAIR PARTS



**THE WHOLESALER'S SOURCE**

**DESCRIPTION:**

Tailwind™ offers various repair parts including parts for water heaters, pumps, circulators, and backflow. Common parts are listed below but many additional parts are available.



**TailWind™ can supply any of your repair part needs. Please check with your PCP representative for availability.**

## Water Heater Repair Parts

**For AO Smith, State, and American Water Heaters.**

**Many more available, but some available parts include:**

- Burner Assembly
- Thermostats
- Tankless Heater Parts
- Pilot Assembly
- Anodes
- Aquasana Product Preserver Systems
- Elements
- Blower Assembly
- Gas Valves
- Ignitors

**Find your parts by serial number at:**  
<http://www.waterheaterparts.com/>

## Pump & Circulator Repair Parts

**For Armstrong and Bell & Gossett pumps and circulators.**

**Many more available, but some available parts include:**

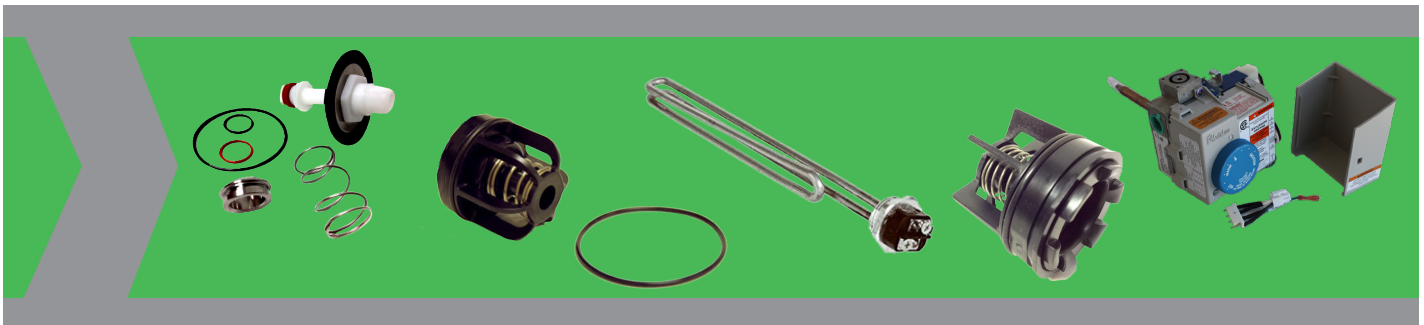
- Seal & Bearing Assembly
- Flanges
- Impellers
- Gaskets
- Couplers

## Backflow Repair Parts

**For Watts and Ames backflow prevention products.**

**Many more available, but some available parts include:**

- Total Repair Kits
- Relief Valve Kits
- Check Kits





PreferredConstructionProducts® represented by



HUGH M. CUNNINGHAM COMPANIES

THE MANUFACTURER'S REPRESENTATIVE  
A BUILDING PRODUCTS COMPANY  
SOUTH CENTRAL USA



2029 Westgate Drive, Suite 120  
Carrollton, TX 75006  
Order Pick Up • 7:00am - 4:00pm  
Customer Service • 7:30am - 6:00pm  
Monday - Friday



4690 Eishenhauer, Ste. 100  
San Antonio, TX 78218  
Order Pick Up • 7:00am - 4:00pm  
Monday - Friday



7436 Fairbanks N. Houston  
Houston TX 77040  
Order Pick Up • 7:00am - 4:00pm  
Monday - Friday

HMC's Regional Distribution Center  
& Warehouse Annexes are operated by -



DISTRIBUTION GROUP





**PreferredConstructionProducts® offers professional grade products for the building trades.**

*PreferredConstructionProducts® is proudly represented by:*

**Hugh M. Cunningham Companies  
in Arkansas, Louisiana, Mississippi, New Mexico, Oklahoma, and Texas.**

*For more information or to place an order for PreferredConstructionProducts® offerings,  
please contact PCP Customer Service:*

**info@PreferredConstructionProducts.com**

**[www.PreferredConstructionProducts.com](http://www.PreferredConstructionProducts.com)**

Your local PreferredConstructionProducts® sales representative who can provide purchasing and price information is:

*PreferredConstructionProducts® is not responsible for typographical or printing errors that may be contained in this catalog.*